

Anti-CRMP4 兔多克隆抗体

K1341457 -20°C


产品信息

蛋白质全称	二氢嘧啶酶相关蛋白 3
别名	CRMP-4, CRMP4, dihydropyrimidinase like 3, DPYSL3, DRP 3, DRP3, LCRMP, ULIP, ULIP 1, ULIP1, Unc 33 like phosphoprotein 1
免疫原	KLH 偶联的小鼠 DPYSL3 合成肽
Uniprot ID	Q62188
抗体亚型	IgG
纯化方式	亲和纯化
亚细胞定位	细胞突起, 细胞质
预测分子量 / 观测分子量	62 kDa / 62 kDa

应用

WB 免疫印迹

物种: 小鼠, 大鼠
 稀释比: 1: 300-1: 1000
 阳性样品:

IHC/IF 免疫组织化学/免疫荧光

物种: 人, 小鼠, 大鼠
 稀释比: 1: 500-1: 3000
 阳性样品: 脑, 肝癌, 胸腺

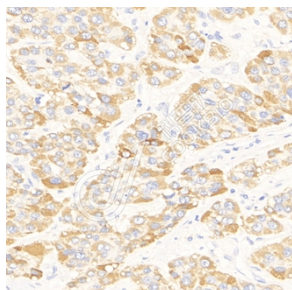
背景

DPYSL3(Dihydropyrimidinase-related protein 3) is also named as CRMP4, DRP3, ULIP, ULIP1 and belongs to the hydantoinase/dihydropyrimidinase subfamily. DPYSL3 is a developmentally regulated protein, strongly expressed in early embryonic post-mitotic neural cells, reaching a peak of expression around the first post-natal week. In the adult brain, DPYSL3 is present mainly in regions that retain neurogenesis. DPYSL3 protein is also found in synaptic sites at the adult neuromuscular junction where it may be involved in the maintenance of neuronal stability. It has 2 isoforms produced by alternative splicing.

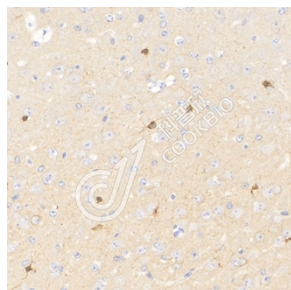
储存条件

储存条件: 自收到之日起 -20°C下储存一年, 避免反复冻融。
储存缓冲液: 含 0.15% ProClin300 防腐剂, 100 µg/mL 牛血清白蛋白和 50%甘油的磷酸盐缓冲液。

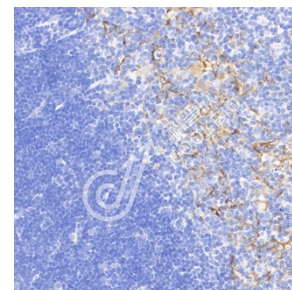
图像



IHC 检测 CRMP4 蛋白(货号 K1341457).
 样品: 人肝癌, 4%多聚甲醛(货号 KSG1101) 固定 12-24 小时.
 抗原修复: 柠檬酸抗原修复液(干粉, pH 6.0) (KSG1201), 98°C, 20 分钟.
 一抗: 1: 1800 稀释, 4°C 孵育过夜.
 二抗: S-vision 免疫组化多聚二抗(山羊抗兔),即用型(货号 KB3906), 室温孵育 20 分钟.



IHC 检测 CRMP4 蛋白(货号 K1341457).
 样品: 小鼠脑, 4%多聚甲醛(货号 KSG1101) 固定 12-24 小时.
 抗原修复: 柠檬酸抗原修复液(干粉, pH 6.0) (KSG1201), 98°C, 20 分钟.
 一抗: 1: 1800 稀释, 4°C 孵育过夜.
 二抗: S-vision 免疫组化多聚二抗(山羊抗兔),即用型(货号 KB3906), 室温孵育 20 分钟.



IHC 检测 CRMP4 蛋白(货号 K1341457).
 样品: 大鼠胸腺, 4%多聚甲醛(货号 KSG1101) 固定 12-24 小时.
 抗原修复: 柠檬酸抗原修复液(干粉, pH 6.0) (KSG1201), 98°C, 20 分钟.
 一抗: 1: 1800 稀释, 4°C 孵育过夜.
 二抗: S-vision 免疫组化多聚二抗(山羊抗兔),即用型(货号 KB3906), 室温孵育 20 分钟.

For Research Use Only!
Ver. No.: V1-202603