

Anti-Maxi Potassium channel alpha/SLO 兔多克隆抗体

K1341781 -20°C


产品信息

蛋白质全称	钙激活钾通道 α -1 亚基
别名	subfamily M subunit alpha-1, BK channel, BKCA alpha, BKCA alpha subunit, BKTm, Drosophila slowpoke like, hSlo, KCa1.1, KCNMA, KCNMA1, Maxi K channel, Slo-alpha, Slo homolog, SLO
免疫原	KLH 偶联的小鼠 Maxi Potassium channel alpha/SLO 合成肽
Uniprot ID	Q08460
抗体亚型	IgG
纯化方式	亲和纯化
预测分子量 / 观测分子量	134 kDa / 134 kDa

应用

WB 免疫印迹

物种：人，小鼠，大鼠

稀释比：1: 300-1: 1000

阳性样品：脑

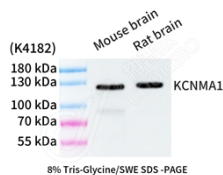
背景

MaxiK channels are large conductance, voltage and calcium-sensitive potassium channels which are fundamental to the control of smooth muscle tone and neuronal excitability. MaxiK channels can be formed by 2 subunits: the pore-forming alpha subunit, which is the product of this gene, and the modulatory beta subunit. Intracellular calcium regulates the physical association between the alpha and beta subunits. Alternatively spliced transcript variants encoding different isoforms have been identified.

储存条件

储存条件：自收到之日起 -20°C 下储存一年，避免反复冻融。
储存缓冲液：含 0.15% ProClin300 防腐剂, 100 μ g/mL 牛血清白蛋白和 50% 甘油的磷酸盐缓冲液。

图像



WB 检测 Maxi Potassium channel alpha/SLO 蛋白(货号 K1341781).
 样品: 经 RIPA 裂解液(货号 KSG2002)处理的蛋白质.
 封闭: 3% 脱脂牛奶(货号 KSGC310001)溶于 TBST 溶液, 室温孵育 1 小时.
 一抗: 1: 1000 稀释, 4°C 孵育过夜.
 二抗: HRP 标记山羊抗兔 IgG (H+L) (货号 KB69909), 1: 5000 稀释, 室温孵育 1 小时.

For Research Use Only!
Ver. No.: V1-202603