

# Anti-PHF17 兔多克隆抗体

**K1341829** -20°C



## 产品信息

蛋白质全称	Jade-1 蛋白
别名	JADE1, KIAA1807, PHD finger protein 17, PHF17, Protein Jade 1, Jade family PHD finger 1, Gene for apoptosis and differentiation in epithelia
免疫原	小鼠 PHF17 重组蛋白
Uniprot ID	Q6ZPI0
抗体亚型	IgG
纯化方式	亲和纯化
预测分子量 / 观测分子量	94 kDa / 60 kDa

## 应用

### WB 免疫印迹

物种: 人, 小鼠, 大鼠

稀释比: 1: 500-1: 1000

阳性样品: 肾

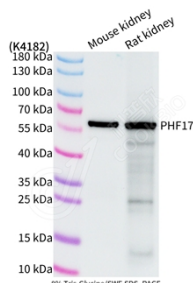
## 背景

Scaffold subunit of some HBO1 complexes, which have a histone H4 acetyltransferase activity. Plays a key role in HBO1 complex by directing KAT7/HBO1 specificity towards histone H4 acetylation (H4K5ac, H4K8ac and H4K12ac), regulating DNA replication initiation, regulating DNA replication initiation. May also promote acetylation of nucleosomal histone H4 by KAT5. Promotes apoptosis. May act as a renal tumor suppressor. Negatively regulates canonical Wnt signaling; at least in part, cooperates with NPHP4 in this function.

## 储存条件

**储存条件:** 自收到之日起 -20°C下储存一年, 避免反复冻融。  
**储存缓冲液:** 含 0.15% ProClin300 防腐剂, 100 μg/mL 牛血清白蛋白和 50%甘油的磷酸盐缓冲液。

## 图像



WB 检测 PHF17 蛋白(货号 K1341829).  
 样品: 经 RIPA 裂解液(货号 KSG2002)处理的蛋白质.  
 封闭: 3%脱脂牛奶(货号 KSGC310001)溶于 TBST 溶液, 室温孵育 1 小时.  
 一抗: 1: 1000 稀释, 4°C 孵育过夜.  
 二抗: HRP 标记山羊抗兔 IgG (H+L) (货号 KB69909), 1: 5000 稀释, 室温孵育 1 小时.

**For Research Use Only!**

**Ver. No.: V1-202603**