

# Anti-NR2C1 兔多克隆抗体

**K1341955** -20°C


## 产品信息

蛋白质全称	核受体亚家族 2C 组成员 1
别名	NR2C1, Orphan nuclear receptor TR2, Testicular receptor 2, TR2
免疫原	KLH 偶联的小鼠 NR2C1 合成肽
Uniprot ID	Q505F1
抗体亚型	IgG
纯化方式	亲和纯化
预测分子量 / 观测分子量	65 kDa / 65 kDa

## 应用

### WB 免疫印迹

物种：小鼠, 大鼠

稀释比：1: 800-1: 1500

阳性样品：睾丸

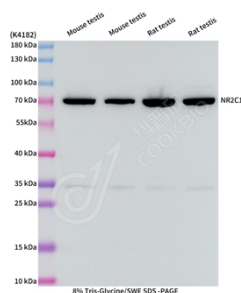
## 背景

Nuclear receptor subfamily 2 group C member 1 (NR2C1), also known as Orphan nuclear receptor TR2, is a member of the steroid/thyroid hormone receptor superfamily that controls a variety of processes, including growth, differentiation and development. TR2 is known to bind to regulatory elements of the erythropoietin gene, the muscle-specific aldolase A gene and the CNTF-15 gene. In addition to TR2, a related orphan receptor, designated TR4, has been identified.

## 储存条件

**储存条件：**自收到之日起 -20°C 下储存一年，避免反复冻融。  
**储存缓冲液：**含 0.15% ProClin300 防腐剂, 100 μg/mL 牛血清白蛋白和 50% 甘油的磷酸盐缓冲液。

## 图像



WB 检测 NR2C1 蛋白(货号 K1341955).  
 样品: 经 RIPA 裂解液(货号 KSG2002)处理的蛋白质.  
 封闭: 3% 脱脂牛奶(货号 KSGC310001)溶于 TBST 溶液,  
 室温孵育 1 小时.  
 一抗: 1: 1000 稀释, 4°C 孵育过夜.  
 二抗: HRP 标记山羊抗兔 IgG (H+L) (货号 KB69909), 1:  
 5000 稀释, 室温孵育 1 小时.

**For Research Use Only!**
**Ver. No.: V1-202603**