

# Anti-RIC8A 兔多克隆抗体

**K1341982** -20°C



## 产品信息

蛋白质全称	Synembryn-A
别名	Protein Ric 8A, RIC8, RIC8A, synembryn, Synembryn A
免疫原	小鼠 RIC8A 重组蛋白
Uniprot ID	Q3TIR3
抗体亚型	IgG
纯化方式	亲和纯化
预测分子量 / 观测分子量	60 kDa / 60 kDa

## 应用

### WB 免疫印迹

物种：人  
 稀释比：1: 3000-1: 6000  
 阳性样品：A-431 细胞

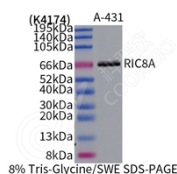
## 背景

RIC8A, also named as synembryn-A, is a Guanine nucleotide exchange factor (GEF), which can activate some, but not all, G-alpha proteins by exchanging bound GDP for free GTP. It is involved in regulation of microtubule pulling forces during mitotic movement of chromosomes by stimulating G(i)-alpha protein, possibly leading to release G(i)-alpha-GTP and NuMA proteins from the NuMA-GPSM2-G(i)-alpha-GDP complex. RIC8A also acts as an activator for G(q)-alpha (GNAQ) protein by enhancing the G(q)-coupled receptor-mediated ERK activation.

## 储存条件

**储存条件：**自收到之日起 -20°C下储存一年，避免反复冻融。  
**储存缓冲液：**含 0.15% ProClin300 防腐剂, 100 µg/mL 牛血清白蛋白和 50%甘油的磷酸盐缓冲液。

## 图像



WB 检测 RIC8A 蛋白(货号 K1341982).  
 样品: 经 RIPA 裂解液(货号 KSG2002)处理的蛋白质.  
 封闭: 3%脱脂牛奶(货号 KSGC310001)溶于 TBST 溶液,  
 室温孵育 1 小时.  
 一抗: 1: 3000 稀释, 4°C 孵育过夜.  
 二抗: HRP 标记山羊抗兔 IgG (H+L) (货号 KB69909), 1:  
 5000 稀释, 室温孵育 1 小时.

**For Research Use Only!**

**Ver. No.: V1-202603**