

Anti-FKBP38 兔多克隆抗体

K1342123 -20°C



产品信息

蛋白质全称	FK506 结合蛋白 8
别名	38 kDa FK506 binding protein, 38 kDa FKBP, FK506 binding protein 8, FK506 binding protein 8, 38kDa, FKBP 38, FKBP 8, FKBP38, FKBP8, FKBPPr38, hFKBP38, PPIase FKBP8, Rotamase
免疫原	KLH 偶联的小鼠 FKBP38 合成肽
Uniprot ID	O35465
抗体亚型	IgG
纯化方式	亲和纯化
预测分子量 / 观测分子量	44 kDa / 44 kDa

应用

WB 免疫印迹

物种: 人, 小鼠, 大鼠

稀释比: 1: 3000-1: 6000

阳性样品: 肝

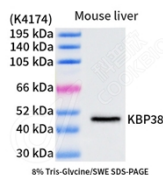
背景

FK506 binding protein 8 (FKBP8), is a member of the immunophilin protein family, which play a role in immunoregulation and basic cellular processes involving protein folding and trafficking. FKBP8 does not seem to have PPIase/rotamase activity, which is different from other members of this family. The active form of FKBP8 may play a role in the regulation of apoptosis. FKBP8 has 3 isoforms produced by alternative splicing.

储存条件

储存条件: 自收到之日起 -20°C下储存一年, 避免反复冻融。
储存缓冲液: 含 0.15% ProClin300 防腐剂, 100 μg/mL 牛血清白蛋白和 50%甘油的磷酸盐缓冲液。

图像



WB 检测 FKBP38 蛋白(货号 K1342123).
 样品: 经 RIPA 裂解液(货号 KSG2002)处理的蛋白质.
 封闭: 3%脱脂牛奶(货号 KSGC310001)溶于 TBST 溶液,
 室温孵育 1 小时.
 一抗: 1: 3000 稀释, 4°C 孵育过夜.
 二抗: HRP 标记山羊抗兔 IgG (H+L) (货号 KB69909), 1:
 5000 稀释, 室温孵育 1 小时.

For Research Use Only!

Ver. No.: V1-202603