

Anti-MEPCE 兔多克隆抗体

K1342768 -20°C


产品信息

蛋白质全称	7SK snRNA 甲基磷酸加帽酶
别名	Bin3 homolog, MEPCE, methylphosphate capping enzyme
免疫原	小鼠 MEPCE 重组蛋白
Uniprot ID	Q8K3A9
抗体亚型	IgG
纯化方式	亲和纯化
亚细胞定位	细胞核
预测分子量 / 观测分子量	72 kDa / 69 kDa

应用

WB 免疫印迹

物种: 人, 小鼠, 大鼠
 稀释比: 1: 800-1: 1500
 阳性样品:

IHC/IF 免疫组织化学/免疫荧光

物种: 小鼠
 稀释比: 1: 2000-1: 4000
 阳性样品: 胎盘, 睾丸

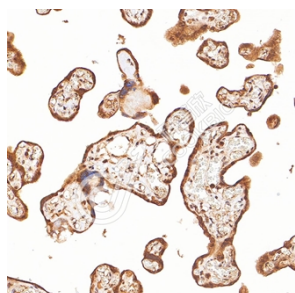
背景

S-adenosyl-L-methionine-dependent methyltransferase that adds a methylphosphate cap at the 5'-end of 7SK snRNA (7SK RNA), leading to stabilize it (By similarity). Also has a non-enzymatic function as part of the 7SK RNP complex: the 7SK RNP complex sequesters the positive transcription elongation factor b (P-TEFb) in a large inactive 7SK RNP complex preventing RNA polymerase II phosphorylation and subsequent transcriptional elongation. The 7SK RNP complex also promotes snRNA gene transcription by RNA polymerase II via interaction with the little elongation complex (LEC) (By similarity). In the 7SK RNP complex, MEPCE is required to stabilize 7SK RNA and facilitate the assembly of 7SK RNP complex (By similarity). MEPCE has a non-enzymatic function in the 7SK RNP complex; it has a non-enzymatic function; interaction with LARP7 within the 7SK RNP complex occluding its catalytic center (By similarity).

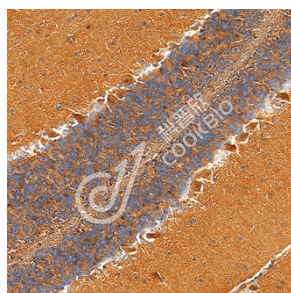
储存条件

储存条件: 自收到之日起 -20°C下储存一年, 避免反复冻融。
储存缓冲液: 含 0.15% ProClin300 防腐剂, 100 µg/mL 牛血清白蛋白和 50%甘油的磷酸盐缓冲液。

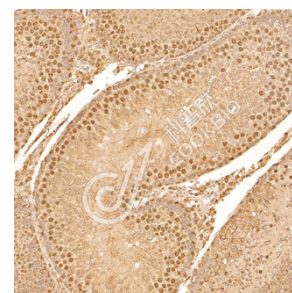
图像



IHC 检测 MEPCE 蛋白(货号 K1342768).
 样品: 人胎盘, 4%多聚甲醛 (货号 KSG1101) 固定 12-24 小时.
 抗原修复: Tris-EDTA 抗原修复液(pH 9.0) (KSG1203), 98°C, 20 分钟.
 一抗: 1: 3000 稀释, 4°C 孵育过夜.
 二抗: S-vision 免疫组化多聚二抗(山羊抗兔),即用型 (货号 KB3906), 室温孵育 20 分钟.



IHC 检测 MEPCE 蛋白(货号 K1342768).
 样品: 小鼠睾丸, 4%多聚甲醛 (货号 KSG1101) 固定 12-24 小时.
 抗原修复: Tris-EDTA 抗原修复液(pH 9.0) (KSG1203), 98°C, 20 分钟.
 一抗: 1: 3000 稀释, 4°C 孵育过夜.
 二抗: S-vision 免疫组化多聚二抗(山羊抗兔),即用型 (货号 KB3906), 室温孵育 20 分钟.



IHC 检测 MEPCE 蛋白(货号 K1342768).
 样品: 大鼠睾丸, 4%多聚甲醛 (货号 KSG1101) 固定 12-24 小时.
 抗原修复: Tris-EDTA 抗原修复液(pH 9.0) (KSG1203), 98°C, 20 分钟.
 一抗: 1: 3000 稀释, 4°C 孵育过夜.
 二抗: S-vision 免疫组化多聚二抗(山羊抗兔),即用型 (货号 KB3906), 室温孵育 20 分钟.

For Research Use Only!
Ver. No.: V1-202603