

# Anti-Rab1A 兔多克隆抗体

**K1343053** -20°C



## 产品信息

蛋白质全称	Ras 相关蛋白 Rab-1A
别名	RAB1, RAB1A, Ras related protein Rab 1A, YPT1, YPT1 related protein
免疫原	KLH 偶联的小鼠 RAB1A 合成肽
Uniprot ID	P62821
抗体亚型	IgG
纯化方式	亲和纯化
预测分子量 / 观测分子量	23 kDa / 28 kDa

## 应用

### WB 免疫印迹

物种: 小鼠, 大鼠

稀释比: 1: 500-1: 1000

阳性样品: 肝

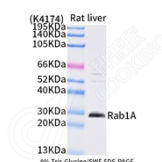
## 背景

The small GTPases Rab are key regulators of intracellular membrane trafficking, from the formation of transport vesicles to their fusion with membranes. Rabs cycle between an inactive GDP-bound form and an active GTP-bound form that is able to recruit to membranes different sets of downstream effectors directly responsible for vesicle formation, movement, tethering and fusion. RAB1A regulates vesicular protein transport from the endoplasmic reticulum (ER) to the Golgi compartment and on to the cell surface, and plays a role in IL-8 and growth hormone secretion (By similarity). Regulates the level of CASR present at the cell membrane (By similarity). Plays a role in cell adhesion and cell migration, via its role in protein trafficking. Plays a role in autophagosome assembly and cellular defense reactions against pathogenic bacteria (By similarity). Plays a role in microtubule-dependent protein transport by early endosomes and in anterograde melanosome transport.

## 储存条件

**储存条件:** 自收到之日起 -20°C下储存一年, 避免反复冻融。  
**储存缓冲液:** 含 0.15% ProClin300 防腐剂, 100 µg/mL 牛血清白蛋白和 50%甘油的磷酸盐缓冲液。

## 图像



WB 检测 Rab1A 蛋白(货号 K1343053).  
 样品: 经 RIPA 裂解液(货号 KSG2002)处理的蛋白质.  
 封闭: 3%脱脂牛奶(货号 KSGC310001)溶于 TBST 溶液, 室温孵育 1 小时.  
 一抗: 1: 1000 稀释, 4°C 孵育过夜.  
 二抗: HRP 标记山羊抗兔 IgG (H+L) (货号 KB69909), 1: 5000 稀释, 室温孵育 1 小时.

**For Research Use Only!**

**Ver. No.: V1-202603**