

# Anti-EIPR1 兔多克隆抗体

**K1343443** -20°C



## 产品信息

蛋白质全称	EARP/GARP 复合体互作蛋白 1
别名	EIPR-1, TSSC1
免疫原	小鼠 EIPR1 重组蛋白
Uniprot ID	Q8K0G5
抗体亚型	IgG
纯化方式	亲和纯化
亚细胞定位	高尔基体

## 应用

### IHC/IF 免疫组织化学/免疫荧光

物种：人  
 稀释比：1: 800-1: 1600  
 阳性样品：结肠, 肝癌

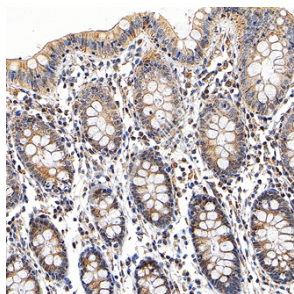
## 背景

Acts as a component of endosomal retrieval machinery that is involved in protein transport from early endosomes to either recycling endosomes or the trans-Golgi network. Mediates the recruitment of Golgi-associated retrograde protein (GARP) complex to the trans-Golgi network and controls early endosome-to-Golgi transport of internalized protein. Promotes the recycling of internalized transferrin receptor (TFRC) to the plasma membrane through interaction with endosome-associated recycling protein (EARP) complex. Controls proper insulin distribution and secretion, and retention of cargo in mature dense core vesicles. Required for the stability of the endosome-associated retrograde protein (EARP) complex subunits and for proper localization and association of EARP with membranes.

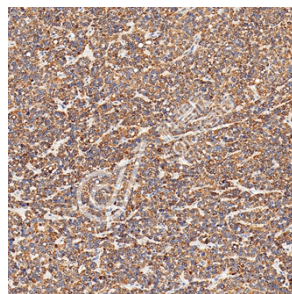
## 储存条件

**储存条件：**自收到之日起 -20°C下储存一年，避免反复冻融。  
**储存缓冲液：**含 0.15% ProClin300 防腐剂, 100 μg/mL 牛血清白蛋白和 50%甘油的磷酸盐缓冲液。

## 图像



IHC 检测 EIPR1 蛋白(货号 K1343443).  
 样品: 人结肠, 4%多聚甲醛 (货号 KSG1101) 固定 12-24 小时.  
 抗原修复: 柠檬酸抗原修复液(干粉, pH 6.0) (KSG1201), 98°C, 20 分钟.  
 一抗: 1: 1200 稀释, 4°C 孵育过夜.  
 二抗: S-vision 免疫组化多聚二抗(山羊抗兔),即用型 (货号 KB3906), 室温孵育 20 分钟.



IHC 检测 EIPR1 蛋白(货号 K1343443).  
 样品: 人肝癌, 4%多聚甲醛 (货号 KSG1101) 固定 12-24 小时.  
 抗原修复: 柠檬酸抗原修复液(干粉, pH 6.0) (KSG1201), 98°C, 20 分钟.  
 一抗: 1: 1200 稀释, 4°C 孵育过夜.  
 二抗: S-vision 免疫组化多聚二抗(山羊抗兔),即用型 (货号 KB3906), 室温孵育 20 分钟.

**For Research Use Only!**

**Ver. No.: V1-202603**