

Anti-S100 beta 兔多克隆抗体

K1343743 -20°C



产品信息

蛋白质全称	S100 钙结合蛋白 B
别名	NEF, S-100 protein beta chain, S-100 protein subunit beta, S100, S100 Beta, S100 calcium binding protein B, S100B, S100beta, S100-B, S100β
免疫原	KLH 偶联的人 S100 beta 合成肽
Uniprot ID	P04271
抗体亚型	IgG
纯化方式	亲和纯化
预测分子量 / 观测分子量	11 kDa / 11 kDa

应用

WB 免疫印迹

物种: 人, 大鼠
 稀释比: 1: 300-1: 600
 阳性样品: 脑

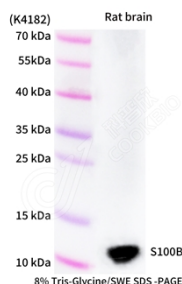
背景

S100B is glial-specific and is expressed primarily by astrocytes, but not all astrocytes express S100B. It has been shown that S100B is only expressed by a subtype of mature astrocytes that ensheath blood vessels and by NG2-expressing cells. This protein may function in neurite extension, proliferation of melanoma cells, stimulation of Ca²⁺ fluxes, inhibition of PKC-mediated phosphorylation, astrocytosis and axonal proliferation, and inhibition of microtubule assembly.

储存条件

储存条件: 自收到之日起 -20°C下储存一年, 避免反复冻融。
储存缓冲液: 含 0.15% ProClin300 防腐剂, 100 μg/mL 牛血清白蛋白和 50%甘油的磷酸盐缓冲液。

图像



WB 检测 S100 beta 蛋白(货号 K1343743).
 样品: 经 RIPA 裂解液(货号 KSG2002)处理的蛋白质.
 封闭: 3%脱脂牛奶(货号 KSGC310001)溶于 TBST 溶液,
 室温孵育 1 小时.
 一抗: 1: 300 稀释, 4°C 孵育过夜.
 二抗: HRP 标记山羊抗兔 IgG (H+L) (货号 KB69909), 1:
 5000 稀释, 室温孵育 1 小时.

For Research Use Only!

Ver. No.: V1-202603