

Anti-Galactose mutarotase 兔多克隆抗体

K1344607 -20°C


产品信息

| | |
|---------------|---|
| 蛋白质全称 | 半乳糖变旋酶 |
| 别名 | Aldose 1 epimerase, BLOCK25, Galactose mutarotase, GALM, IBD1 |
| 免疫原 | KLH 偶联的小鼠 Galactose mutarotase 合成肽 |
| Uniprot ID | Q8K157 |
| 抗体亚型 | IgG |
| 纯化方式 | 亲和纯化 |
| 亚细胞定位 | 细胞质 |
| 预测分子量 / 观测分子量 | 38 kDa / 38 kDa |

应用

WB 免疫印迹

物种: 人
 稀释比: 1: 500-1: 1000
 阳性样品:

IHC/IF 免疫组织化学/免疫荧光

物种: 人
 稀释比: 1: 1000-1: 2000
 阳性样品: 阿尔茨海默病脑

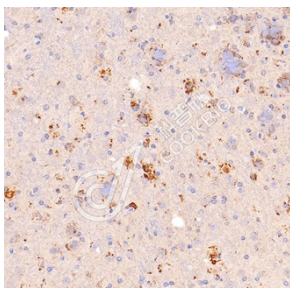
背景

Mutarotase that catalyzes the interconversion of beta-D-galactose and alpha-D-galactose during galactose metabolism. Beta-D-galactose is metabolized in the liver into glucose 1-phosphate, the primary metabolic fuel, by the action of four enzymes that constitute the Leloir pathway: GALM, GALK1 (galactokinase), GALT (galactose-1-phosphate uridylyltransferase) and GALE (UDP-galactose-4'-epimerase). Involved in the maintenance of the equilibrium between the beta- and alpha-anomers of galactose, therefore ensuring a sufficient supply of the alpha-anomer for GALK1. Also active on D-glucose although shows a preference for galactose over glucose.

储存条件

储存条件: 自收到之日起 -20°C下储存一年, 避免反复冻融。
储存缓冲液: 含 0.15% ProClin300 防腐剂, 100 µg/mL 牛血清白蛋白和 50%甘油的磷酸盐缓冲液。

图像



IHC 检测 Galactose mutarotase 蛋白(货号 K1344607).
 样品: 小鼠阿尔茨海默病脑, 4%多聚甲醛 (货号 KSG1101) 固定 12-24 小时.
 抗原修复: Tris-EDTA 抗原修复液(pH 9.0) (KSG1203), 98°C, 20 分钟.
 一抗: 1: 1500 稀释, 4°C 孵育过夜.
 二抗: S-vision 免疫组化多聚二抗(山羊抗兔), 即用型 (货号 KB3906), 室温孵育 20 分钟.

For Research Use Only!
Ver. No.: V1-202603