

Anti-CENPE 兔多克隆抗体

K1344886 -20°C



产品信息

蛋白质全称	着丝粒关联蛋白 E
别名	CENP E, Centromere protein E, centromere protein E, 312kDa, KIF10, Kinesin related protein CENPE
免疫原	KLH 偶联的人 CENPE 合成肽
Uniprot ID	Q02224
抗体亚型	IgG
纯化方式	亲和纯化
预测分子量 / 观测分子量	316 kDa / 310 kDa

应用

WB 免疫印迹

物种：小鼠，大鼠

稀释比：1: 100-1: 300

阳性样品：胸腺

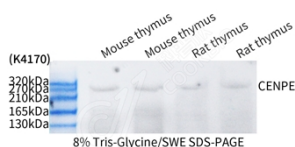
背景

Microtubule plus-end-directed kinetochore motor which plays an important role in chromosome congression, microtubule-kinetochore conjugation and spindle assembly checkpoint activation. Drives chromosome congression (alignment of chromosomes at the spindle equator resulting in the formation of the metaphase plate) by mediating the lateral sliding of polar chromosomes along spindle microtubules towards the spindle equator and by aiding the establishment and maintenance of connections between kinetochores and spindle microtubules. The transport of pole-proximal chromosomes towards the spindle equator is favored by microtubule tracks that are deetyrosinated.

储存条件

储存条件：自收到之日起 -20°C下储存一年，避免反复冻融。
储存缓冲液：含 0.15% ProClin300 防腐剂, 100 μg/mL 牛血清白蛋白和 50%甘油的磷酸盐缓冲液。

图像



WB 检测 CENPE 蛋白(货号 K1344886).
 样品: 经 RIPA 裂解液(货号 KSG2002)处理的蛋白质.
 封闭: 3%脱脂牛奶(货号 KSGC310001)溶于 TBST 溶液,
 室温孵育 1 小时.
 一抗: 1: 1000 稀释, 4°C 孵育过夜.
 二抗: HRP 标记山羊抗兔 IgG (H+L) (货号 KB69909), 1:
 5000 稀释, 室温孵育 1 小时.

For Research Use Only!

Ver. No.: V1-202603