

Anti-COLEC11 兔多克隆抗体

K1345120 -20°C


产品信息

蛋白质全称	胶原凝集素 11
别名	CL K1, CL K1 I, CL K1 II, CL K1 IIa, CL K1 IIb, CLK1, Collectin 11, Collectin kidney protein 1, collectin sub family member 11
免疫原	KLH 偶联的小鼠 COLEC11 合成肽
Uniprot ID	Q3SXB8
抗体亚型	IgG
纯化方式	亲和纯化
亚细胞定位	分泌型
预测分子量 / 观测分子量	29 kDa / 35 kDa

应用

WB 免疫印迹

物种: 小鼠
 稀释比: 1: 2000-1: 3000
 阳性样品:

IHC/IF 免疫组织化学/免疫荧光

物种: 人, 小鼠, 大鼠
 稀释比: 1: 500-1: 2000
 阳性样品: 结肠, 肝, 肝癌

背景

Lectin that plays a role in innate immunity, apoptosis and embryogenesis. Calcium-dependent lectin that binds self and non-self glycoproteins presenting high mannose oligosaccharides with at least one terminal alpha-1,2-linked mannose epitope. Primarily recognizes the terminal disaccharide of the glycan. Also recognizes a subset of fucosylated glycans and lipopolysaccharides. Plays a role in innate immunity through its ability to bind non-self sugars presented by microorganisms and to activate the complement through the recruitment of MAPS1. Also plays a role in apoptosis through its ability to bind in a calcium-independent manner the DNA present at the surface of apoptotic cells and to activate the complement in response to this binding.

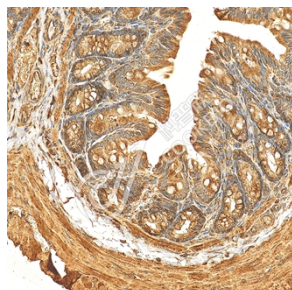
储存条件

储存条件: 自收到之日起 -20°C下储存一年, 避免反复冻融。
储存缓冲液: 含 0.15% ProClin300 防腐剂, 100 µg/mL 牛血清白蛋白和 50%甘油的磷酸盐缓冲液。

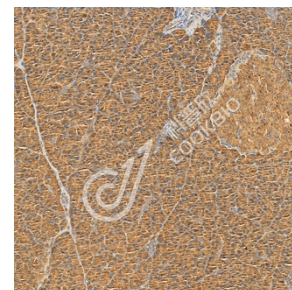
图像



IHC 检测 COLEC11 蛋白(货号 K1345120).
 样品: 人肝癌, 4%多聚甲醛(货号 KSG1101) 固定 12-24 小时.
 抗原修复: Tris-EDTA 抗原修复液(pH 9.0) (KSG1203), 98°C, 20 分钟.
 一抗: 1: 1300 稀释, 4°C 孵育过夜.
 二抗: S-vision 免疫组化多聚二抗(山羊抗兔), 即用型(货号 KB3906), 室温孵育 20 分钟.



IHC 检测 COLEC11 蛋白(货号 K1345120).
 样品: 大鼠结肠, 4%多聚甲醛(货号 KSG1101) 固定 12-24 小时.
 抗原修复: Tris-EDTA 抗原修复液(pH 9.0) (KSG1203), 98°C, 20 分钟.
 一抗: 1: 1300 稀释, 4°C 孵育过夜.
 二抗: S-vision 免疫组化多聚二抗(山羊抗兔), 即用型(货号 KB3906), 室温孵育 20 分钟.



IHC 检测 COLEC11 蛋白(货号 K1345120).
 样品: 大鼠胰腺, 4%多聚甲醛(货号 KSG1101) 固定 12-24 小时.
 抗原修复: Tris-EDTA 抗原修复液(pH 9.0) (KSG1203), 98°C, 20 分钟.
 一抗: 1: 1300 稀释, 4°C 孵育过夜.
 二抗: S-vision 免疫组化多聚二抗(山羊抗兔), 即用型(货号 KB3906), 室温孵育 20 分钟.

For Research Use Only!
Ver. No.: V1-202603