

Anti-LEPREL1 兔多克隆抗体

K1345354 -20°C


产品信息

蛋白质全称	脯氨酰 3-羟化酶 2
别名	leprecan like 1, Leprecan like protein 1, LEPREL1, MLAT4, P3H2, Prolyl 3 hydroxylase 2
免疫原	KLH 偶联的小鼠 P3H2 合成肽
Uniprot ID	Q8CG71
抗体亚型	IgG
纯化方式	亲和纯化
预测分子量 / 观测分子量	80 kDa / 90 kDa

应用

WB 免疫印迹

物种：小鼠

稀释比：1: 1500-1: 2000

阳性样品：肾

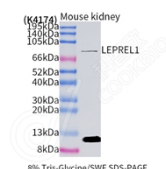
背景

Prolyl 3-hydroxylase that catalyzes the post-translational formation of 3-hydroxyproline on collagens. Contributes to proline 3-hydroxylation of collagen COL4A1 and COL1A1 in tendons, the eye sclera and in the eye lens capsule. Has high activity with the type IV collagen COL4A1, and lower activity with COL1A1. Catalyzes hydroxylation of the first Pro in Gly-Pro-Hyp sequences where Hyp is 4-hydroxyproline. Has no activity on substrates that have proline instead of 4-hydroxyproline in the third position (By similarity).

储存条件

储存条件：自收到之日起 -20°C下储存一年，避免反复冻融。
储存缓冲液：含 0.15% ProClin300 防腐剂, 100 μg/mL 牛血清白蛋白和 50%甘油的磷酸盐缓冲液。

图像



WB 检测 LEPREL1 蛋白(货号 K1345354).
 样品: 经 RIPA 裂解液(货号 KSG2002)处理的蛋白质.
 封闭: 3%脱脂牛奶(货号 KSGC310001)溶于 TBST 溶液,
 室温孵育 1 小时.
 一抗: 1: 1500 稀释, 4°C 孵育过夜.
 二抗: HRP 标记山羊抗兔 IgG (H+L) (货号 KB69909), 1:
 5000 稀释, 室温孵育 1 小时.

For Research Use Only!
Ver. No.: V1-202603