

Anti-SUN1 兔多克隆抗体

K1345657 -20°C



产品信息

蛋白质全称	含 SUN 结构域的蛋白 1
别名	KIAA0810, Protein unc 84 homolog A, Sad1/unc 84 protein like 1, SUN1, unc 84 homolog A (C. elegans), UNC84A
免疫原	KLH 偶联的人 SUN1 合成肽
Uniprot ID	O94901
抗体亚型	IgG
纯化方式	亲和纯化
亚细胞定位	核内膜

应用

IHC/IF 免疫组织化学/免疫荧光

物种: 小鼠, 大鼠

稀释比: 1: 700-1: 2100

阳性样品: 胎盘

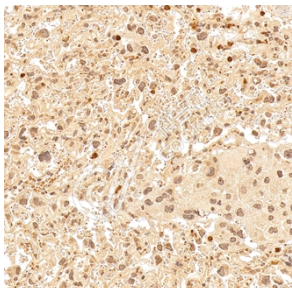
背景

As a component of the LINC (Linker of Nucleoskeleton and Cytoskeleton) complex involved in the connection between the nuclear lamina and the cytoskeleton. The nucleocytoplasmic interactions established by the LINC complex play an important role in the transmission of mechanical forces across the nuclear envelope and in nuclear movement and positioning. Required for interkinetic nuclear migration (INM) and essential for nucleokinesis and centrosome-nucleus coupling during radial neuronal migration in the cerebral cortex and during glial migration. Involved in telomere attachment to nuclear envelope in the prophase of meiosis implicating a SUN1/2:KASH5 LINC complex in which SUN1 and SUN2 seem to act at least partial redundantly.

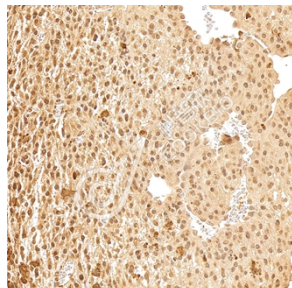
储存条件

储存条件: 自收到之日起 -20°C下储存一年, 避免反复冻融。
储存缓冲液: 含 0.15% ProClin300 防腐剂, 100 µg/mL 牛血清白蛋白和 50%甘油的磷酸盐缓冲液。

图像



IHC 检测 SUN1 蛋白(货号 K1345657).
 样品: 小鼠胎盘, 4%多聚甲醛 (货号 KSG1101) 固定 12-24 小时.
 抗原修复: Tris-EDTA 抗原修复液(pH 9.0) (KSG1203), 98°C, 20 分钟.
 一抗: 1: 1400 稀释, 4°C 孵育过夜.
 二抗: S-vision 免疫组化多聚二抗(山羊抗兔),即用型 (货号 KB3906), 室温孵育 20 分钟.



IHC 检测 SUN1 蛋白(货号 K1345657).
 样品: 大鼠胎盘, 4%多聚甲醛 (货号 KSG1101) 固定 12-24 小时.
 抗原修复: Tris-EDTA 抗原修复液(pH 9.0) (KSG1203), 98°C, 20 分钟.
 一抗: 1: 1400 稀释, 4°C 孵育过夜.
 二抗: S-vision 免疫组化多聚二抗(山羊抗兔),即用型 (货号 KB3906), 室温孵育 20 分钟.

For Research Use Only!

Ver. No.: V1-202603