

Anti-CACNA1E 兔多克隆抗体

K1345711 -20°C



产品信息

蛋白质全称	电压依赖性 R 型钙通道 α 1E 亚基
别名	BII, Brain calcium channel II, CACH6, CACNA1E, CACNL1A6, Cav2.3
免疫原	KLH 偶联的小鼠 CACNA1E 合成肽
Uniprot ID	Q61290
抗体亚型	IgG
纯化方式	亲和纯化
预测分子量 / 观测分子量	257 kDa / 300 kDa

应用

WB 免疫印迹

物种：小鼠，大鼠

稀释比：1: 300-1: 600

阳性样品：脑

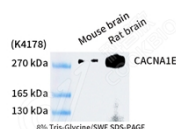
背景

Voltage-sensitive calcium channels (VSCC) mediate the entry of calcium ions into excitable cells and are also involved in a variety of calcium-dependent processes, including muscle contraction, hormone or neurotransmitter release, gene expression, cell motility, cell division and cell death. The isoform α -1E gives rise to R-type calcium currents. R-type calcium channels belong to the 'high-voltage activated' (HVA) group and are blocked by nickel. They are however insensitive to dihydropyridines (DHP). Calcium channels containing α -1E subunit could be involved in the modulation of firing patterns of neurons which is important for information processing.

储存条件

储存条件：自收到之日起 -20°C 下储存一年，避免反复冻融。
储存缓冲液：含 0.15% ProClin300 防腐剂, 100 μ g/mL 牛血清白蛋白和 50% 甘油的磷酸盐缓冲液。

图像



WB 检测 CACNA1E 蛋白(货号 K1345711).
 样品: 经 RIPA 裂解液(货号 KSG2002)处理的蛋白质.
 封闭: 3% 脱脂牛奶(货号 KSGC310001)溶于 TBST 溶液,
 室温孵育 1 小时.
 一抗: 1: 300 稀释, 4°C 孵育过夜.
 二抗: HRP 标记山羊抗兔 IgG (H+L) (货号 KB69909), 1:
 5000 稀释, 室温孵育 1 小时.

For Research Use Only!

Ver. No.: V1-202603