

Anti-LYNX1 兔多克隆抗体

K1345789 -20°C



产品信息

蛋白质全称	Ly-6/神经毒素样蛋白 1
别名	Ly6/neurotoxin 1, LYNX1, SLURP 2, SLURP2
免疫原	KLH 偶联的小鼠 LYNX1 合成肽
Uniprot ID	P0DP60
抗体亚型	IgG
纯化方式	亲和纯化
亚细胞定位	细胞膜, 细胞突起
预测分子量 / 观测分子量	13 kDa / 15 kDa

应用

WB 免疫印迹

物种: 人, 小鼠, 大鼠
 稀释比: 1: 500-1: 1000
 阳性样品: 脑

IHC/IF 免疫组织化学/免疫荧光

物种: 大鼠
 稀释比: 1: 500-1: 1500
 阳性样品: 脑

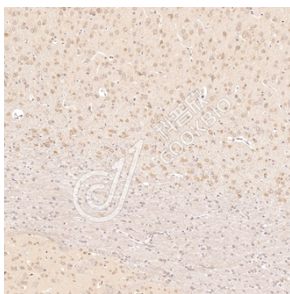
背景

Acts in different tissues through interaction to nicotinic acetylcholine receptors (nAChRs). The proposed role as modulator of nAChR activity seems to be dependent on the nAChR subtype and stoichiometry, and to involve an effect on nAChR trafficking and its cell surface expression, and on single channel properties of the nAChR inserted in the plasma membrane. Modulates functional properties of nicotinic acetylcholine receptors (nAChRs) to prevent excessive excitation, and hence neurodegeneration. Enhances desensitization by increasing both the rate and extent of desensitization of alpha-4:beta-2-containing nAChRs and slowing recovery from desensitization. Promotes large amplitude ACh-evoked currents through alpha-4:beta-2 nAChRs. Is involved in regulation of the nAChR pentameric assembly in the endoplasmic reticulum.

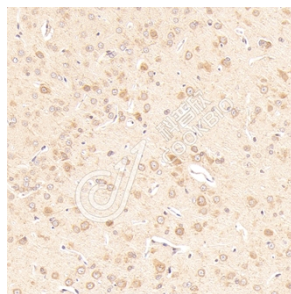
储存条件

储存条件: 自收到之日起 -20°C下储存一年, 避免反复冻融。
储存缓冲液: 含 0.15% ProClin300 防腐剂, 100 µg/mL 牛血清白蛋白和 50%甘油的磷酸盐缓冲液。

图像



IHC 检测 LYNX1 蛋白(货号 K1345789).
 样品: 大鼠脑, 4%多聚甲醛 (货号 KSG1101) 固定 12-24 小时.
 抗原修复: Tris-EDTA 抗原修复液(pH 9.0) (KSG1203), 98°C, 20 分钟.
 一抗: 1: 1000 稀释, 4°C 孵育过夜.
 二抗: S-vision 免疫组化多聚二抗(山羊抗兔),即用型 (货号 KB3906), 室温孵育 20 分钟.



IHC 检测 LYNX1 蛋白(货号 K1345789).
 样品: 大鼠脑, 4%多聚甲醛 (货号 KSG1101) 固定 12-24 小时.
 抗原修复: Tris-EDTA 抗原修复液(pH 9.0) (KSG1203), 98°C, 20 分钟.
 一抗: 1: 1000 稀释, 4°C 孵育过夜.
 二抗: S-vision 免疫组化多聚二抗(山羊抗兔),即用型 (货号 KB3906), 室温孵育 20 分钟.

For Research Use Only!

Ver. No.: V1-202603