

# Anti-LRPPRC/GP130 兔多克隆抗体

K1346107 -20°C



## 产品信息

蛋白质全称	线粒体富亮氨酸 PPR 基序蛋白
别名	130 kDa leucine rich protein, CLONE 23970, GP130, LRP 130, LRP130, LRPPRC, LSFC
免疫原	小鼠 LRPPRC/GP130 重组蛋白
Uniprot ID	Q6PB66
抗体亚型	IgG
纯化方式	亲和纯化
预测分子量 / 观测分子量	157 kDa / 140 kDa

## 应用

### WB 免疫印迹

物种: 小鼠

稀释比: 1: 1000-1: 2000

阳性样品: 肝, 心

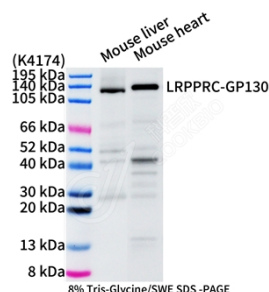
## 背景

May play a role in RNA metabolism in both nuclei and mitochondria. In the nucleus binds to HNRPA1-associated poly(A) mRNAs and is part of nmRNP complexes at late stages of mRNA maturation which are possibly associated with nuclear mRNA export. May bind mature mRNA in the nucleus outer membrane. In mitochondria binds to poly(A) mRNA. Plays a role in translation or stability of mitochondrially encoded cytochrome c oxidase (COX) subunits. May be involved in transcription regulation. Cooperates with PPARGC1A to regulate certain mitochondrially encoded genes and gluconeogenic genes and may regulate docking of PPARGC1A to transcription factors. Seems to be involved in the transcription regulation of the multidrug-related genes MDR1 and MVP.

## 储存条件

**储存条件:** 自收到之日起 -20°C下储存一年, 避免反复冻融。  
**储存缓冲液:** 含 0.15% ProClin300 防腐剂, 100 µg/mL 牛血清白蛋白和 50%甘油的磷酸盐缓冲液。

## 图像



WB 检测 LRPPRC/GP130 蛋白(货号 K1346107).  
 样品: 经 RIPA 裂解液(货号 KSG2002)处理的蛋白质.  
 封闭: 3%脱脂牛奶(货号 KSGC310001)溶于 TBST 溶液, 室温孵育 1 小时.  
 一抗: 1: 1000 稀释, 4°C 孵育过夜.  
 二抗: HRP 标记山羊抗兔 IgG (H+L) (货号 KB69909), 1: 5000 稀释, 室温孵育 1 小时.

For Research Use Only!

Ver. No.: V1-202603