

Anti-LRP1 兔多克隆抗体

K1346419 -20°C



产品信息

蛋白质全称	低密度脂蛋白受体相关蛋白 1
别名	A2MR, Alpha 2 macroglobulin receptor, APOER, Apolipoprotein E receptor, APR, CD91, IGFBP3R, LRP, LRP 1, LRP1, LRPICD, TGFBR5
免疫原	KLH 偶联的小鼠 LRP1 合成磷酸肽
Uniprot ID	Q91ZX7
抗体亚型	IgG
纯化方式	亲和纯化
预测分子量 / 观测分子量	505 kDa / 85 kDa

应用

WB 免疫印迹

物种: 小鼠, 大鼠

稀释比: 1: 300-1: 500

阳性样品: 肺

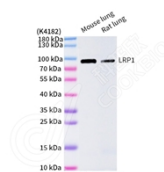
背景

Endocytic receptor involved in endocytosis and in phagocytosis of apoptotic cells. Required for early embryonic development. Involved in cellular lipid homeostasis. Involved in the plasma clearance of chylomicron remnants and activated LRPAP1 (alpha 2-macroglobulin), as well as the local metabolism of complexes between plasminogen activators and their endogenous inhibitors. Acts as an alpha-2-macroglobulin receptor (By similarity). Acts as TAU/MAPT receptor and controls the endocytosis of TAU/MAPT as well as its subsequent spread. May modulate cellular events, such as APP metabolism, kinase-dependent intracellular signaling, neuronal calcium signaling as well as neurotransmission (By similarity).; (Microbial infection) Functions as a receptor for Vibrio cholerae cholix toxin and for Pseudomonas aeruginosa exotoxin A.

储存条件

储存条件: 自收到之日起 -20°C下储存一年, 避免反复冻融。
储存缓冲液: 含 0.15% ProClin300 防腐剂, 100 µg/mL 牛血清白蛋白和 50%甘油的磷酸盐缓冲液。

图像



WB 检测 LRP1 蛋白(货号 K1346419).
 样品: 经 RIPA 裂解液(货号 KSG2002)处理的蛋白质.
 封闭: 3%脱脂牛奶(货号 KSGC310001)溶于 TBST 溶液, 室温孵育 1 小时.
 一抗: 1: 300 稀释, 4°C 孵育过夜.
 二抗: HRP 标记山羊抗兔 IgG (H+L) (货号 KB69909), 1: 5000 稀释, 室温孵育 1 小时.

For Research Use Only!

Ver. No.: V1-202603