

# Anti-TCF3/E2A 兔多克隆抗体

K1346467 -20°C



## 产品信息

蛋白质全称	转录因子 E2α
别名	bHLHb21, E2A, ITF1, Kappa E2 binding factor, TCF3, Transcription factor 3, Transcription factor E2 alpha, Transcription factor ITF 1
免疫原	KLH 偶联的小鼠 TCF3 合成肽
Uniprot ID	P15806
抗体亚型	IgG
纯化方式	亲和纯化
预测分子量 / 观测分子量	68 kDa / 70 kDa

## 应用

### WB 免疫印迹

物种：人  
 稀释比：1: 300-1: 400  
 阳性样品：Raji 细胞

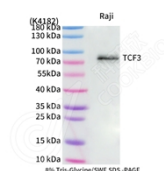
## 背景

Transcriptional regulator involved in the initiation of neuronal differentiation and mesenchymal to epithelial transition. Heterodimers between TCF3 and tissue-specific basic helix-loop-helix (bHLH) proteins play major roles in determining tissue-specific cell fate during embryogenesis, like muscle or early B-cell differentiation. Together with TCF15, required for the mesenchymal to epithelial transition. Dimers bind DNA on E-box motifs: 5'-CANNTG-3'. Binds to the kappa-E2 site in the kappa immunoglobulin gene enhancer (By similarity). Binds to IEB1 and IEB2, which are short DNA sequences in the insulin gene transcription control region.

## 储存条件

**储存条件：**自收到之日起 -20°C下储存一年，避免反复冻融。  
**储存缓冲液：**含 0.15% ProClin300 防腐剂, 100 μg/mL 牛血清白蛋白和 50%甘油的磷酸盐缓冲液。

## 图像



WB 检测 TCF3/E2A 蛋白(货号 K1346467).  
 样品: 经 RIPA 裂解液(货号 KSG2002)处理的蛋白质.  
 封闭: 3%脱脂牛奶(货号 KSGC310001)溶于 TBST 溶液,  
 室温孵育 1 小时.  
 一抗: 1: 300 稀释, 4°C 孵育过夜.  
 二抗: HRP 标记山羊抗兔 IgG (H+L) (货号 KB69909), 1:  
 5000 稀释, 室温孵育 1 小时.

For Research Use Only!

Ver. No.: V1-202603