

Anti-LGR5 兔多克隆抗体

K1346599 -20°C



产品信息

蛋白质全称	富含亮氨酸重复 G 蛋白偶联受体 5
别名	G-protein coupled receptor 49, Orphan G-protein coupled receptor FEX, Lgr5, Gpr49, FEX, HG38
免疫原	KLH 偶联的小鼠 LGR5 合成肽
Uniprot ID	Q9Z1P4
抗体亚型	IgG
纯化方式	亲和纯化
预测分子量 / 观测分子量	100 kDa / 100-120 kDa

应用

WB 免疫印迹

物种：小鼠，大鼠

稀释比：1: 300-1: 500

阳性样品：脑

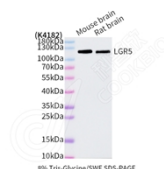
背景

Receptor for R-spondins that potentiates the canonical Wnt signaling pathway and acts as a stem cell marker of the intestinal epithelium and the hair follicle. Upon binding to R-spondins (RSPO1, RSPO2, RSPO3 or RSPO4), associates with phosphorylated LRP6 and frizzled receptors that are activated by extracellular Wnt receptors, triggering the canonical Wnt signaling pathway to increase expression of target genes. In contrast to classical G-protein coupled receptors, does not activate heterotrimeric G-proteins to transduce the signal. Involved in the development and/or maintenance of the adult intestinal stem cells during postembryonic development.

储存条件

储存条件：自收到之日起 -20°C 下储存一年，避免反复冻融。
储存缓冲液：含 0.15% ProClin300 防腐剂, 100 µg/mL 牛血清白蛋白和 50% 甘油的磷酸盐缓冲液。

图像



WB 检测 LGR5 蛋白(货号 K1346599).
 样品: 经 RIPA 裂解液(货号 KSG2002)处理的蛋白质.
 封闭: 3% 脱脂牛奶(货号 KSGC310001)溶于 TBST 溶液,
 室温孵育 1 小时.
 一抗: 1: 300 稀释, 4°C 孵育过夜.
 二抗: HRP 标记山羊抗兔 IgG (H+L) (货号 KB69909), 1:
 5000 稀释, 室温孵育 1 小时.

For Research Use Only!

Ver. No.: V1-202603