

Anti-PI4K2B 兔多克隆抗体

K1344484 -20°C



产品信息

蛋白质全称	磷脂酰肌醇 4-激酶 2β型
别名	PI 4 Kinase type 2 beta, PI4K2B, PI4KII BETA, PI4KIIB, PIK42B
免疫原	KLH 偶联的小鼠 PI4K2B 合成肽
Uniprot ID	Q8CBQ5
抗体亚型	IgG
纯化方式	亲和纯化
预测分子量 / 观测分子量	53 kDa / 54 kDa

应用

WB 免疫印迹

物种：小鼠，大鼠

稀释比：1: 800-1: 1500

阳性样品：肾

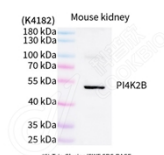
背景

Together with PI4K2A and the type III PI4Ks (PIK4CA and PIK4CB) it contributes to the overall PI4-kinase activity of the cell. This contribution may be especially significant in plasma membrane, endosomal and Golgi compartments. The phosphorylation of phosphatidylinositol (PI) to PI4P is the first committed step in the generation of phosphatidylinositol 4,5-bisphosphate (PIP2), a precursor of the second messenger inositol 1,4,5-trisphosphate (InsP3). Contributes to the production of InsP3 in stimulated cells and is likely to be involved in the regulation of vesicular trafficking.

储存条件

储存条件：自收到之日起 -20°C下储存一年，避免反复冻融。
储存缓冲液：含 0.15% ProClin300 防腐剂, 100 μg/mL 牛血清白蛋白和 50%甘油的磷酸盐缓冲液。

图像



WB 检测 PI4K2B 蛋白(货号 K1344484).
 样品: 经 RIPA 裂解液(货号 KSG2002)处理的蛋白质.
 封闭: 3%脱脂牛奶(货号 KSGC310001)溶于 TBST 溶液,
 室温孵育 1 小时.
 一抗: 1: 1000 稀释, 4°C 孵育过夜.
 二抗: HRP 标记山羊抗兔 IgG (H+L) (货号 KB69909), 1:
 5000 稀释, 室温孵育 1 小时.

For Research Use Only!

Ver. No.: V1-202603