

Anti-Aurora B 兔多克隆抗体

K1346734 -20°C



产品信息

蛋白质全称	极光激酶 B
别名	Aurora 1, Aurora/IPL1-related kinase 2, ARK-2, Aurora-related kinase 2, STK-1, Serine/threonine-protein kinase aurora-B, Aurora-and IPL1-like midbody-associated protein 1, Serine/threonine-protein kinase 5, Aurora B, AuroraB, Aurora Kinase B, AurB
免疫原	KLH 偶联的小鼠 Aurora B 合成肽
Uniprot ID	O70126
抗体亚型	IgG
纯化方式	亲和纯化
亚细胞定位	细胞核, 细胞质, 细胞骨架

应用

IHC/IF 免疫组织化学/免疫荧光

物种: 大鼠

稀释比: 1: 100-1: 200

阳性样品: 胸腺

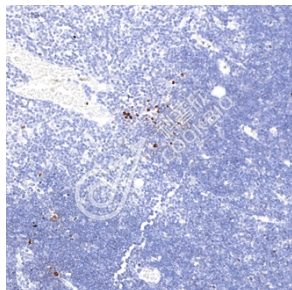
背景

This gene encodes a member of the aurora kinase subfamily of serine/threonine kinases. The genes encoding the other two members of this subfamily are located on chromosomes 19 and 20. These kinases participate in the regulation of segregation of chromosomes during mitosis and meiosis through association with microtubules. A pseudogene of this gene is located on chromosome 8. Multiple transcript variants encoding different isoforms have been found for this gene.

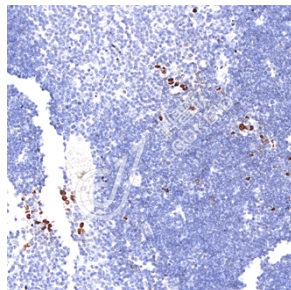
储存条件

储存条件: 自收到之日起 -20°C下储存一年, 避免反复冻融。
储存缓冲液: 含 0.15% ProClin300 防腐剂, 100 µg/mL 牛血清白蛋白和 50%甘油的磷酸盐缓冲液。

图像



IHC 检测 Aurora B 蛋白(货号 K1346734).
 样品: 大鼠胸腺, 4%多聚甲醛 (货号 KSG1101) 固定 12-24 小时.
 抗原修复: Tris-EDTA 抗原修复液(pH 9.0) (KSG1203), 98°C, 20 分钟.
 一抗: 1: 200 稀释, 4°C 孵育过夜.
 二抗: S-vision 免疫组化多聚二抗(山羊抗兔),即用型 (货号 KB3906), 室温孵育 20 分钟.



IHC 检测 Aurora B 蛋白(货号 K1346734).
 样品: 大鼠胸腺, 4%多聚甲醛 (货号 KSG1101) 固定 12-24 小时.
 抗原修复: Tris-EDTA 抗原修复液(pH 9.0) (KSG1203), 98°C, 20 分钟.
 一抗: 1: 200 稀释, 4°C 孵育过夜.
 二抗: S-vision 免疫组化多聚二抗(山羊抗兔),即用型 (货号 KB3906), 室温孵育 20 分钟.

For Research Use Only!

Ver. No.: V1-202603