

# Anti-Natriuretic peptides A 兔多克隆抗体

**K1346755 -20°C**


## 产品信息

蛋白质全称	心房利钠肽
别名	ANF, ANP, ATRN, Atrial natriuretic factor, Atrial natriuretic peptide, CDD ANF, CDP, NPPA, PND, Prepronatriodilatin
免疫原	KLH 偶联的小鼠 ANP 合成肽
Uniprot ID	P05125
抗体亚型	IgG
纯化方式	亲和纯化
亚细胞定位	分泌型

## 应用

### IHC/IF 免疫组织化学/免疫荧光

物种：小鼠，大鼠

稀释比：1: 150-1: 300

阳性样品：白色脂肪

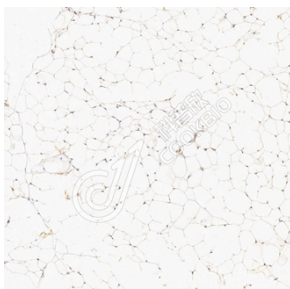
## 背景

Hormone that plays a key role in mediating cardio-renal homeostasis, and is involved in vascular remodeling and regulating energy metabolism. Acts by specifically binding and stimulating NPR1 to produce cGMP, which in turn activates effector proteins, such as PRKG1, that drive various biological responses. Regulates vasodilation, natriuresis, diuresis and aldosterone synthesis and is therefore essential for regulating blood pressure, controlling the extracellular fluid volume and maintaining the fluid-electrolyte balance. Also involved in inhibiting cardiac remodeling and cardiac hypertrophy by inducing cardiomyocyte apoptosis and attenuating the growth of cardiomyocytes and fibroblasts. Plays a role in female pregnancy by promoting trophoblast invasion and spiral artery remodeling in uterus, and thus prevents pregnancy-induced hypertension. In adipose tissue, acts in various cGMP- and PKG-dependent pathways to regulate lipid metabolism and energy homeostasis.

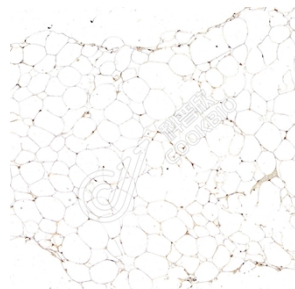
## 储存条件

**储存条件：**自收到之日起 -20°C下储存一年，避免反复冻融。  
**储存缓冲液：**含 0.15% ProClin300 防腐剂, 100 µg/mL 牛血清白蛋白和 50%甘油的磷酸盐缓冲液。

## 图像



IHC 检测 Natriuretic peptides A 蛋白(货号 K1346755).  
 样品: 小鼠白色脂肪, 4%多聚甲醛 (货号 KSG1101) 固定 12-24 小时.  
 抗原修复: Tris-EDTA 抗原修复液(pH 9.0) (KSG1203), 98°C, 20 分钟.  
 一抗: 1: 200 稀释, 4°C 孵育过夜.  
 二抗: S-vision 免疫组化多聚二抗(山羊抗兔),即用型 (货号 KB3906), 室温孵育 20 分钟.



IHC 检测 Natriuretic peptides A 蛋白(货号 K1346755).  
 样品: 大鼠白色脂肪, 4%多聚甲醛 (货号 KSG1101) 固定 12-24 小时.  
 抗原修复: Tris-EDTA 抗原修复液(pH 9.0) (KSG1203), 98°C, 20 分钟.  
 一抗: 1: 200 稀释, 4°C 孵育过夜.  
 二抗: S-vision 免疫组化多聚二抗(山羊抗兔),即用型 (货号 KB3906), 室温孵育 20 分钟.

**For Research Use Only!**
**Ver. No.: V1-202603**