

Anti-HLA-B 兔多克隆抗体

K1346869 -20°C



产品信息

蛋白质全称	HLA I 类组织相容性抗原 B α链
别名	AS, HLA B, HLA B 7301, HLA B73, HLA class I (HLA-B), HLAB, HLA-B, HLAC, MHC class I antigen B*7, SPDA1
免疫原	人 HLA-B 重组蛋白
Uniprot ID	P01889
抗体亚型	IgG
纯化方式	亲和纯化
预测分子量 / 观测分子量	40 kDa / 43 kDa

应用

WB 免疫印迹

物种：人
 稀释比：1: 1000-1: 2000
 阳性样品：Raji 细胞

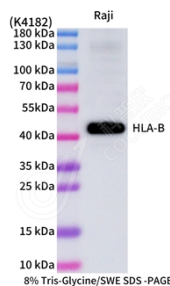
背景

Antigen-presenting major histocompatibility complex class I (MHC) molecule. In complex with B2M/beta 2 microglobulin displays primarily viral and tumor-derived peptides on antigen-presenting cells for recognition by alpha-beta T cell receptor (TCR) on HLA-B-restricted CD8-positive T cells, guiding antigen-specific T cell immune response to eliminate infected or transformed cells. May also present self-peptides derived from the signal sequence of secreted or membrane proteins, although T cells specific for these peptides are usually inactivated to prevent autoreactivity. Both the peptide and the MHC molecule are recognized by TCR, the peptide is responsible for the fine specificity of antigen recognition and MHC residues account for the MHC restriction of T cells.

储存条件

储存条件：自收到之日起 -20°C 下储存一年，避免反复冻融。
储存缓冲液：含 0.15% ProClin300 防腐剂, 100 μg/mL 牛血清白蛋白和 50% 甘油的磷酸盐缓冲液。

图像



WB 检测 HLA-B 蛋白(货号 K1346869).
 样品: 经 RIPA 裂解液(货号 KSG2002)处理的蛋白质.
 封闭: 3%脱脂牛奶(货号 KSGC310001)溶于 TBST 溶液, 室温孵育 1 小时.
 一抗: 1: 1000 稀释, 4°C 孵育过夜.
 二抗: HRP 标记山羊抗兔 IgG (H+L) (货号 KB69909), 1: 5000 稀释, 室温孵育 1 小时.

For Research Use Only!

Ver. No.: V1-202603