

# Anti-HLA G 兔多克隆抗体

K1346935 -20°C



## 产品信息

|               |  |
|---------------|--|
| 蛋白质全称         | HLA I 类组织相容性抗原α链 G   |
| 别名            | HLA 6.0, HLA G, HLA G antigen, HLAG, HLA-G, MHC class I antigen G, MHC G |
| 免疫原           | KLH 偶联的人 HLA-G 合成肽   |
| Uniprot ID    | P17693   |
| 抗体亚型          | IgG  |
| 纯化方式          | 亲和纯化   |
| 预测分子量 / 观测分子量 | 38 kDa / 35 kDa  |

## 应用

### WB 免疫印迹

物种：大鼠

稀释比：1: 500-1: 2000

阳性样品：PC-12 细胞

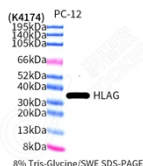
## 背景

[Isoform 1]: Non-classical major histocompatibility class Ib molecule involved in immune regulatory processes at the maternal-fetal interface. In complex with B2M/beta-2 microglobulin binds a limited repertoire of nonamer self-peptides derived from intracellular proteins including histones and ribosomal proteins. Peptide-bound HLA-G-B2M complex acts as a ligand for inhibitory/activating KIR2DL4, LILRB1 and LILRB2 receptors on uterine immune cells to promote fetal development while maintaining maternal-fetal tolerance. Upon interaction with KIR2DL4 and LILRB1 receptors on decidual NK cells, it triggers NK cell senescence-associated secretory phenotype as a molecular switch to promote vascular remodeling and fetal growth in early pregnancy.

## 储存条件

**储存条件：**自收到之日起 -20°C下储存一年，避免反复冻融。  
**储存缓冲液：**含 0.15% ProClin300 防腐剂, 100 μg/mL 牛血清白蛋白和 50%甘油的磷酸盐缓冲液。

## 图像



WB 检测 HLA G 蛋白(货号 K1346935).  
 样品: 经 RIPA 裂解液(货号 KSG2002)处理的蛋白质.  
 封闭: 3%脱脂牛奶(货号 KSGC310001)溶于 TBST 溶液,  
 室温孵育 1 小时.  
 一抗: 1: 500 稀释, 4°C 孵育过夜.  
 二抗: HRP 标记山羊抗兔 IgG (H+L) (货号 KB69909), 1:  
 5000 稀释, 室温孵育 1 小时.

For Research Use Only!

Ver. No.: V1-202603