

Anti-MCL1 兔多克隆抗体

K1346974 -20°C



产品信息

蛋白质全称	诱导髓系白血病细胞分化蛋白 Mcl1 同源物
别名	Mcl1, MCL1, BCL2L3, EAT, MCL1-ES, MCL1L, MCL1S, Mcl-1, TM, bcl2-L-3, mcl1/EAT, Myeloid cell leukemia 1, BCL2 family apoptosis regulator, BCL2 family apoptosis regulator
免疫原	小鼠 MCL1 重组蛋白
Uniprot ID	P97287
抗体亚型	IgG
纯化方式	亲和纯化
预测分子量 / 观测分子量	35 kDa / 35 kDa

应用

WB 免疫印迹

物种: 小鼠, 大鼠

稀释比: 1: 500-1: 1000

阳性样品: A20 细胞

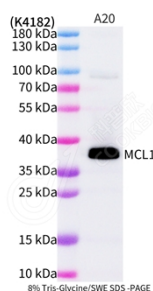
背景

Induced myeloid leukemia cell differentiation protein Mcl-1 belongs to the Bcl-2 family. Alternative splicing occurs at this locus and two transcript variants encoding distinct isoforms have been identified. The longer gene product (isoform 1) enhances cell survival by inhibiting apoptosis while the alternatively spliced shorter gene product (isoform 2) promotes apoptosis and is death-inducing.

储存条件

储存条件: 自收到之日起 -20°C下储存一年, 避免反复冻融。
储存缓冲液: 含 0.15% ProClin300 防腐剂, 100 µg/mL 牛血清白蛋白和 50%甘油的磷酸盐缓冲液。

图像



WB 检测 MCL1 蛋白(货号 K1346974).
 样品: 经 RIPA 裂解液(货号 KSG2002)处理的蛋白质.
 封闭: 3%脱脂牛奶(货号 KSGC310001)溶于 TBST 溶液,
 室温孵育 1 小时.
 一抗: 1: 500 稀释, 4°C 孵育过夜.
 二抗: HRP 标记山羊抗兔 IgG (H+L) (货号 KB69909), 1:
 5000 稀释, 室温孵育 1 小时.

For Research Use Only!

Ver. No.: V1-202603