

# Recombinant Anti-PODXL antibody (小鼠单克隆抗体)

**K5456156 -20°C**


## 产品信息

蛋白质全称	足糖萼蛋白
别名	GCTM 2 antigen, Gp200, PC, PCLP, PCLP-1, PCLP1, Podocalyxin, podocalyxin like, Podocalyxin like protein 1, PODXL
免疫原	人 PODXL 重组蛋白
Uniprot ID	O00592
抗体亚型	IgG1, κ
克隆号	SB140
纯化方式	亲和纯化
亚细胞定位	细胞膜

## 应用

### IHC/IF 免疫组织化学/免疫荧光

物种: 人  
 稀释比: 1: 500-1: 1000  
 阳性样品: 肾

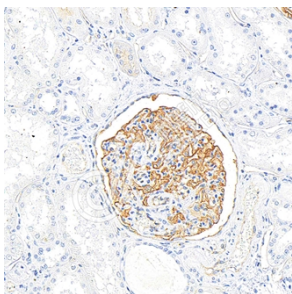
## 背景

Involved in the regulation of both adhesion and cell morphology and cancer progression. Functions as an anti-adhesive molecule that maintains an open filtration pathway between neighboring foot processes in the podocyte by charge repulsion. Acts as a pro-adhesive molecule, enhancing the adherence of cells to immobilized ligands, increasing the rate of migration and cell-cell contacts in an integrin-dependent manner. Induces the formation of apical actin-dependent microvilli. Involved in the formation of a preapical plasma membrane subdomain to set up initial epithelial polarization and the apical lumen formation during renal tubulogenesis. Plays a role in cancer development and aggressiveness by inducing cell migration and invasion through its interaction with the actin-binding protein EZR. Affects EZR-dependent signaling events, leading to increased activities of the MAPK and PI3K pathways in cancer cells.

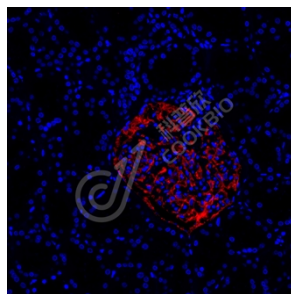
## 储存条件

**储存条件:** 自收到之日起 -20°C下储存一年, 避免反复冻融。  
**储存缓冲液:** 含 0.15% ProClin300 防腐剂, 100 μg/mL 牛血清白蛋白和 50%甘油的磷酸盐缓冲液。

## 图像



IHC 检测 PODXL 蛋白(货号 K5456156).  
 样品: 人肾, 4%多聚甲醛 (货号 KSG1101) 固定 12-24 小时.  
 抗原修复: 柠檬酸抗原修复液(干粉, pH 6.0) (KSG1201), 高压锅均匀喷气计时 2 分钟.  
 一抗: 1: 800 稀释, 4°C 孵育过夜.  
 二抗: S-vision 免疫组化多聚二抗(山羊抗小鼠), 即用型 (货号 KB3903), 室温孵育 20 分钟.



IF 检测 PODXL 蛋白(货号 K5456156)(红色).  
 样品: 人肾, 4%多聚甲醛 (货号 KSG1101) 固定 12-24 小时.  
 抗原修复: 柠檬酸抗原修复液(干粉, pH 6.0) (KSG1201), 高压锅均匀喷气计时 2 分钟.  
 封闭: 3% BSA (货号 KSGC305010) 的 PBS 溶液, 室温孵育 30 分钟.  
 一抗: 1: 800 稀释, 4°C 孵育过夜.  
 二抗: Cy3 标记山羊抗小鼠 IgG (H+L) (货号 KB63903), 1: 300 稀释, 室温孵育 1 小时.

**For Research Use Only!**
**Ver. No.: V1-202603**