

Anti-MMP1 兔多克隆抗体

K1347124 -20°C



产品信息

蛋白质全称	间质胶原酶
别名	CLG, CLGN, Fibroblast collagenase, Interstitial collagenase, Matrix metalloproteinase 1, MMP 1, MMP1, MMP-1
免疫原	KLH 偶联的人 MMP1 合成肽
Uniprot ID	P03956
抗体亚型	IgG
纯化方式	亲和纯化
亚细胞定位	分泌型, 胞外空间, 胞外基质

应用

IHC/IF 免疫组织化学/免疫荧光

物种: 人
 稀释比: 1: 500-1: 1500
 阳性样品: 乳腺癌, 宫颈癌

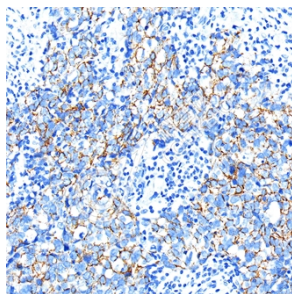
背景

This gene encodes a member of the peptidase M10 family of matrix metalloproteinases (MMPs). Proteins in this family are involved in the breakdown of extracellular matrix in normal physiological processes, such as embryonic development, reproduction, and tissue remodeling, as well as in disease processes, such as arthritis and metastasis. The encoded preproprotein is proteolytically processed to generate the mature protease. This secreted protease breaks down the interstitial collagens, including types I, II, and III. The gene is part of a cluster of MMP genes on chromosome 11. Mutations in this gene are associated with chronic obstructive pulmonary disease (COPD). Alternative splicing results in multiple transcript variants, at least one of which encodes an isoform that is proteolytically processed.

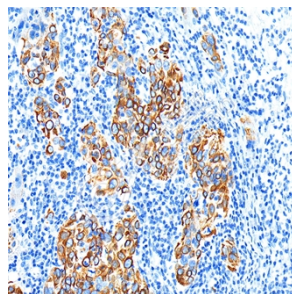
储存条件

储存条件: 自收到之日起 -20°C下储存一年, 避免反复冻融。
储存缓冲液: 含 0.15% ProClin300 防腐剂, 100 μg/mL 牛血清白蛋白和 50%甘油的磷酸盐缓冲液。

图像



IHC 检测 MMP1 蛋白(货号 K1347124).
 样品: 人乳腺癌, 4%多聚甲醛 (货号 KSG1101) 固定 12-24 小时.
 抗原修复: 柠檬酸抗原修复液(干粉, pH 6.0) (KSG1201), 98°C, 20 分钟.
 一抗: 1: 1000 稀释, 4°C 孵育过夜.
 二抗: S-vision 免疫组化多聚二抗(山羊抗兔),即用型 (货号 KB3906), 室温孵育 20 分钟.



IHC 检测 MMP1 蛋白(货号 K1347124).
 样品: 人宫颈癌, 4%多聚甲醛 (货号 KSG1101) 固定 12-24 小时.
 抗原修复: 柠檬酸抗原修复液(干粉, pH 6.0) (KSG1201), 98°C, 20 分钟.
 一抗: 1: 1000 稀释, 4°C 孵育过夜.
 二抗: S-vision 免疫组化多聚二抗(山羊抗兔),即用型 (货号 KB3906), 室温孵育 20 分钟.

For Research Use Only!

Ver. No.: V1-202603