

Recombinant Anti-Connexin 43/GJA1 antibody (兔单克隆抗体)

K545702 -20°C


产品信息

蛋白质全称	间隙连接蛋白α1
别名	GJA1, AVSD3, CMDR, CX43, EKVP, GJAL, HLHS1, HSS, ODDD, PPKCA, gap junction protein alpha 1
免疫原	人 Connexin 43 重组蛋白
Uniprot ID	P17302
抗体亚型	IgG2b, κ
克隆号	SB324
纯化方式	亲和纯化
亚细胞定位	细胞膜, 细胞连接
预测分子量 / 观测分子量	43 kDa / 43 kDa

应用

WB 免疫印迹

物种: 小鼠, 大鼠
 稀释比: 1: 1000-1: 2000
 阳性样品:

IHC/IF 免疫组织化学/免疫荧光

物种: 人, 小鼠, 大鼠
 稀释比: 1: 1000-1: 2000
 阳性样品: 心

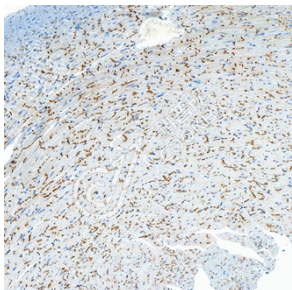
背景

Gap junction protein that acts as a regulator of bladder capacity. A gap junction consists of a cluster of closely packed pairs of transmembrane channels, the connexons, through which materials of low MW diffuse from one cell to a neighboring cell. May play a critical role in the physiology of hearing by participating in the recycling of potassium to the cochlear endolymph. Negative regulator of bladder functional capacity: acts by enhancing intercellular electrical and chemical transmission, thus sensitizing bladder muscles to cholinergic neural stimuli and causing them to contract. May play a role in cell growth inhibition through the regulation of NOV expression and localization. Plays an essential role in gap junction communication in the ventricles.

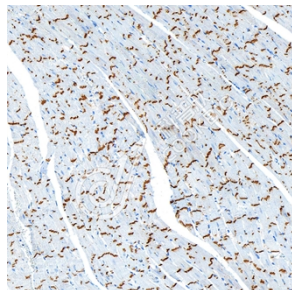
储存条件

储存条件: 自收到之日起 -20°C下储存一年, 避免反复冻融。
储存缓冲液: 含 0.15% ProClin300 防腐剂, 100 μg/mL 牛血清白蛋白和 50%甘油的磷酸盐缓冲液。

图像



IHC 检测 Connexin 43/GJA1 蛋白(货号 K545702).
 样品: 小鼠心, 4%多聚甲醛 (货号 KSG1101) 固定 12-24 小时.
 抗原修复: 柠檬酸抗原修复液(干粉, pH 6.0) (KSG1201), 高压锅均匀喷气计时 2 分钟.
 一抗: 1: 1500 稀释, 4°C 孵育过夜.
 二抗: S-vision 免疫组化多聚二抗(山羊抗兔),即用型 (货号 KB3906), 室温孵育 20 分钟.



IHC 检测 Connexin 43/GJA1 蛋白(货号 K545702).
 样品: 大鼠心, 4%多聚甲醛 (货号 KSG1101) 固定 12-24 小时.
 抗原修复: 柠檬酸抗原修复液(干粉, pH 6.0) (KSG1201), 高压锅均匀喷气计时 2 分钟.
 一抗: 1: 1500 稀释, 4°C 孵育过夜.
 二抗: S-vision 免疫组化多聚二抗(山羊抗兔),即用型 (货号 KB3906), 室温孵育 20 分钟.

For Research Use Only!
Ver. No.: V1-202603