

Recombinant Anti-p70 S6 Kinase antibody (兔单克隆抗体)

K5450165 -20°C


产品信息

蛋白质全称	核糖体蛋白 S6 激酶β-1
别名	S6K-beta-1, p70 alpha, p70 ribosomal S6 kinase alpha, p70 S6 kinase alpha, p70 S6K 1, p70 S6K alpha, p70 S6KA, p70(S6K), p70(S6K) alpha, p70S6K, P70S6K1, PS6K, Ribosomal protein S6 kinase I, RPS6KB1, S6K, S6K1, STK14A
免疫原	人 p70 S6Kinase 重组蛋白
Uniprot ID	P23443
抗体亚型	IgG, κ
克隆号	SB352
纯化方式	亲和纯化
预测分子量 / 观测分子量	51-60 kDa / 65 kDa

应用

WB 免疫印迹

物种：人，小鼠，大鼠
 稀释比：1: 1000-1: 2000
 阳性样品：脑，C6 细胞

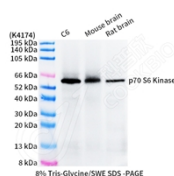
背景

RPS6KB1(Ribosomal protein S6 kinase beta-1) is also named as STK14A, p70 S6KA and belongs to the S6 kinase subfamily. RPS6KB1 is a major substrate of MTOR and acts as a crucial effector of MTOR signaling pathway. It plays a key role in cell growth and proliferation by regulating INS sensitivity, metabolism, protein synthesis, and cell cycle. RPS6KB1 may play an important role in the progression of HCC and could serve as a potential molecular target for HCC therapy. RPS6KB1 is a 70 kDa protein and has 5 isoforms with the calculated molecular mass of 51-59 kDa produced by alternative initiation.

储存条件

储存条件：自收到之日起 -20°C下储存一年，避免反复冻融。
储存缓冲液：含 0.15% ProClin300 防腐剂, 100 μg/mL 牛血清白蛋白和 50%甘油的磷酸盐缓冲液。

图像



WB 检测 p70 S6 Kinase 蛋白(货号 K5450165).
 样品: 经 RIPA 裂解液(货号 KSG2002)处理的蛋白质.
 封闭: 3%脱脂牛奶(货号 KSGC310001)溶于 TBST 溶液, 室温孵育 1 小时.
 一抗: 1: 1000 稀释, 4°C 孵育过夜.
 二抗: HRP 标记山羊抗兔 IgG (H+L) (货号 KB69909), 1: 5000 稀释, 室温孵育 1 小时.

For Research Use Only!
Ver. No.: V1-202603