

Recombinant Anti-Smad3 antibody (兔单克隆抗体)

K5450255 -20°C


产品信息

蛋白质全称	SMAD 同源蛋白 3
别名	MADH3, SMAD3, SMAD family member 3 (SMAD 3; Smad3; hSMAD3), JV15-2
免疫原	KLH 偶联的人 Smad3 合成肽
Uniprot ID	P84022
抗体亚型	IgG
克隆号	SB446
纯化方式	亲和纯化
亚细胞定位	细胞质, 细胞核
预测分子量 / 观测分子量	49 kDa / 55 kDa

应用

WB 免疫印迹

物种: 人, 小鼠, 大鼠
 稀释比: 1: 1000-1: 2000
 阳性样品:

IHC/IF 免疫组织化学/免疫荧光

物种: 人, 小鼠, 大鼠
 稀释比: 1: 2000-1: 4000
 阳性样品: 肾, 脾, 睾丸

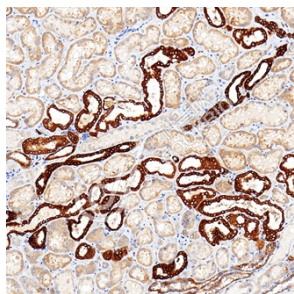
背景

Receptor-regulated SMAD (R-SMAD) that is an intracellular signal transducer and transcriptional modulator activated by TGF-beta (transforming growth factor) and activin type 1 receptor kinases. Binds the TRE element in the promoter region of many genes that are regulated by TGF-beta and, on formation of the SMAD3/SMAD4 complex, activates transcription. Also can form a SMAD3/SMAD4/JUN/FOS complex at the AP-1/SMAD site to regulate TGF-beta-mediated transcription. Has an inhibitory effect on wound healing probably by modulating both growth and migration of primary keratinocytes and by altering the TGF-mediated chemotaxis of monocytes. This effect on wound healing appears to be hormone-sensitive. Regulator of chondrogenesis and osteogenesis and inhibits early healing of bone fractures. Positively regulates PDPK1 kinase activity by stimulating its dissociation from the 14-3-3 protein YWHAQ which acts as a negative regulator.

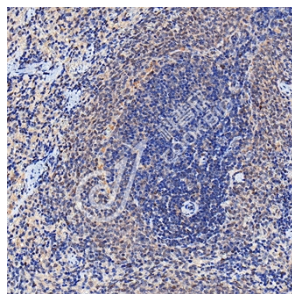
储存条件

储存条件: 自收到之日起 -20°C下储存一年, 避免反复冻融。
储存缓冲液: 含 0.15% ProClin300 防腐剂, 100 µg/mL 牛血清白蛋白和 50%甘油的磷酸盐缓冲液。

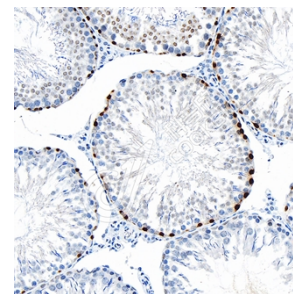
图像



IHC 检测 Smad3 蛋白(货号 K5450255).
 样品: 人肾, 4%多聚甲醛 (货号 KSG1101) 固定 12-24 小时.
 抗原修复: Tris-EDTA 抗原修复液(pH 9.0) (KSG1203), 100°C, 25 分钟.
 一抗: 1: 3000 稀释, 4°C 孵育过夜.
 二抗: S-vision 免疫组化多聚二抗(山羊抗兔),即用型 (货号 KB3906), 室温孵育 20 分钟.



IHC 检测 Smad3 蛋白(货号 K5450255).
 样品: 小鼠脾, 4%多聚甲醛 (货号 KSG1101) 固定 12-24 小时.
 抗原修复: Tris-EDTA 抗原修复液(pH 9.0) (KSG1203), 100°C, 25 分钟.
 一抗: 1: 3000 稀释, 4°C 孵育过夜.
 二抗: S-vision 免疫组化多聚二抗(山羊抗兔),即用型 (货号 KB3906), 室温孵育 20 分钟.



IHC 检测 Smad3 蛋白(货号 K5450255).
 样品: 大鼠睾丸, 4%多聚甲醛 (货号 KSG1101) 固定 12-24 小时.
 抗原修复: Tris-EDTA 抗原修复液(pH 9.0) (KSG1203), 100°C, 25 分钟.
 一抗: 1: 3000 稀释, 4°C 孵育过夜.
 二抗: S-vision 免疫组化多聚二抗(山羊抗兔),即用型 (货号 KB3906), 室温孵育 20 分钟.

For Research Use Only!
Ver. No.: V1-202603