

Anti-TLR4 兔多克隆抗体

K133558 -20°C



产品信息

蛋白质全称	Toll 样受体 4
别名	Lps,TLR4, ARMD10, CD284, TLR-4, TOLL, toll like receptor 4
免疫原	KLH 偶联的小鼠 TLR4 合成肽
Uniprot ID	Q9QUK6
抗体亚型	IgG
纯化方式	亲和纯化
亚细胞定位	细胞膜, 早期内体, 细胞突起

应用

IHC/IF 免疫组织化学/免疫荧光

物种: 人, 大鼠

稀释比: 1: 500-1: 1000

阳性样品: 脾, 扁桃体

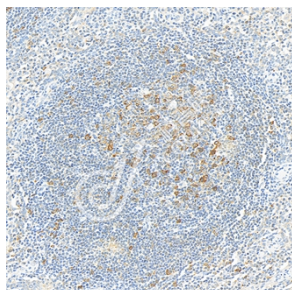
背景

TLR4 is a transmembrane protein, member of the toll-like receptor family, which belongs to the pattern recognition receptor (PRR) family. Its activation leads to an intracellular signaling pathway NF- κ B and inflammatory cytokine production which is responsible for activating the innate immune system. It is most well known for recognizing lipopolysaccharide (LPS), a component present in many Gram-negative bacteria (e.g. *Neisseria* spp.) and select Gram-positive bacteria. Its ligands also include several viral proteins, polysaccharide, and a variety of endogenous proteins such as low-density lipoprotein, beta-defensins, and heat shock protein.

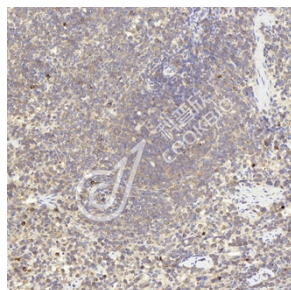
储存条件

储存条件: 自收到之日起 -20°C 下储存一年, 避免反复冻融。
储存缓冲液: 含 0.15% ProClin300 防腐剂, 100 μ g/mL 牛血清白蛋白和 50% 甘油的磷酸盐缓冲液。

图像



IHC 检测 TLR4 蛋白(货号 K133558).
 样品: 人扁桃体, 4%多聚甲醛(货号 KSG1101) 固定 12-24 小时.
 抗原修复: 柠檬酸抗原修复液(干粉, pH 6.0) (KSG1201), 98°C, 20 分钟.
 一抗: 1: 800 稀释, 4°C 孵育过夜.
 二抗: S-vision 免疫组化多聚二抗(山羊抗兔), 即用型(货号 KB3906), 室温孵育 20 分钟.



IHC 检测 TLR4 蛋白(货号 K133558).
 样品: 大鼠脾, 4%多聚甲醛(货号 KSG1101) 固定 12-24 小时.
 抗原修复: 柠檬酸抗原修复液(干粉, pH 6.0) (KSG1201), 98°C, 20 分钟.
 一抗: 1: 800 稀释, 4°C 孵育过夜.
 二抗: S-vision 免疫组化多聚二抗(山羊抗兔), 即用型(货号 KB3906), 室温孵育 20 分钟.

For Research Use Only!

Ver. No.: V1-202603