

Anti-ERK2 兔多克隆抗体

K134110 -20°C



产品信息

蛋白质全称	丝裂原活化蛋白激酶 1
别名	MAPK1, ERK, ERK-2, ERK2, ERT1, MAPK2, P42MAPK, PRKM1, PRKM2, p38, p40, p41, p41mapk, p42-MAPK, mitogen-activated protein kinase 1
免疫原	小鼠 ERK2 重组蛋白
Uniprot ID	P63085
抗体亚型	IgG
纯化方式	亲和纯化
预测分子量 / 观测分子量	42 kDa / 42 kDa

应用

WB 免疫印迹

物种：人，小鼠，大鼠

稀释比：1: 500-1: 1000

阳性样品：脾

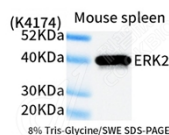
背景

The protein encoded by this gene is a member of the MAP kinase family. MAP kinases, also known as extracellular signal-regulated kinases (ERKs), act as an integration point for multiple biochemical signals, and are involved in a wide variety of cellular processes such as proliferation, differentiation, transcription regulation and development. The activation of this kinase requires its phosphorylation by upstream kinases.

储存条件

储存条件：自收到之日起 -20°C 下储存一年，避免反复冻融。
储存缓冲液：含 0.15% ProClin300 防腐剂, 100 μg/mL 牛血清白蛋白和 50% 甘油的磷酸盐缓冲液。

图像



WB 检测 ERK2 蛋白(货号 K134110).
 样品：经 RIPA 裂解液(货号 KSG2002)处理的蛋白质。
 封闭：3%脱脂牛奶(货号 KSGC310001)溶于 TBST 溶液，
 室温孵育 1 小时。
 一抗：1: 500 稀释, 4°C 孵育过夜。
 二抗：HRP 标记山羊抗兔 IgG (H+L) (货号 KB69909), 1:
 5000 稀释, 室温孵育 1 小时。

For Research Use Only!

Ver. No.: V1-202603