

Anti-Ly6c 兔多克隆抗体

K134518 -20°C


产品信息

蛋白质全称	淋巴细胞抗原 6C1
别名	Ly 6c, Ly6c protein, Ly-6C, Ly6c1, Ly6c2, Lymphocyte antigen 6C, Lymphocyte antigen 6C1, Lymphocyte antigen 6C2
免疫原	KLH 偶联的小鼠 Ly6c1 合成肽
Uniprot ID	P0CW02
抗体亚型	IgG
纯化方式	亲和纯化
预测分子量 / 观测分子量	14 kDa / 14 kDa

应用

WB 免疫印迹

物种：小鼠

稀释比：1: 300-1: 600

阳性样品：胸腺

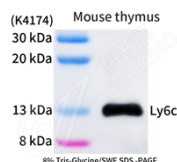
背景

Ly6C is a monocyte/macrophage and endothelial cell differentiation antigen regulated by interferon gamma, and may play a role in the development and maturation of lymphocytes. It is a member of the Ly6 multigene family of type V glycosphosphatidylinositol anchored cell surface proteins. It is expressed on bone marrow cells, monocytes/macrophages, neutrophils, endothelial cells, and T cell subsets. Mice with the Ly6.2 allotype (e.g., AKR, C57BL, C57BR, C57L, DBA/2, PL, SJL, SWR, 129) have subsets of CD4+Ly6C+ and CD8+Ly6C+ cells, while Ly6.1 strains (e.g., A, BALB/c, CBA, C3H/He, DBA/1, NZB) have only CD8+Ly6C+ lymphocytes.

储存条件

储存条件：自收到之日起 -20°C下储存一年，避免反复冻融。
储存缓冲液：含 0.15% ProClin300 防腐剂, 100 μg/mL 牛血清白蛋白和 50%甘油的磷酸盐缓冲液。

图像



WB 检测 Ly6c 蛋白(货号 K134518).
 样品: 经 RIPA 裂解液(货号 KSG2002)处理的蛋白质.
 封闭: 3%脱脂牛奶(货号 KSGC310001)溶于 TBST 溶液,
 室温孵育 1 小时.
 一抗: 1: 500 稀释, 4°C 孵育过夜.
 二抗: HRP 标记山羊抗兔 IgG (H+L) (货号 KB69909), 1:
 5000 稀释, 室温孵育 1 小时.

For Research Use Only!
Ver. No.: V1-202603