

# Anti-TLR2 兔多克隆抗体

K134662 -20°C



## 产品信息

蛋白质全称	Toll 样受体 2
别名	TLR2, CD282, TIL4, Toll like receptor, Toll/interleukin 1 receptor like protein 4, Toll like receptor 2 precursor
免疫原	KLH 偶联的小鼠 TLR2 合成肽
Uniprot ID	Q9QUN7
抗体亚型	IgG
纯化方式	亲和纯化
亚细胞定位	膜

## 应用

### IHC/IF 免疫组织化学/免疫荧光

物种: 小鼠, 大鼠

稀释比: 1: 500-1: 3000

阳性样品: LPS 诱导的脓毒症模型脾脏, 脾脏炎症

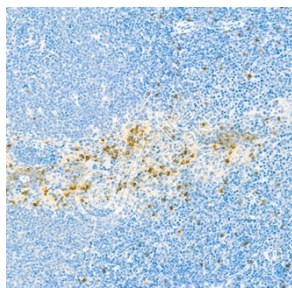
## 背景

TLR2 is a member of the Toll-like receptor (TLR) family, which plays a fundamental role in pathogen recognition and activation of innate immunity. TLRs are highly conserved from Drosophila to humans and share structural and functional similarities, while the various TLRs exhibit different patterns of expression. This gene is expressed most abundantly in peripheral blood leukocytes, and mediates host response to Gram-positive bacteria and yeast via stimulation of NF-κB. In the intestine, TLR2 regulates the expression of CYP1A1, which is a key enzyme in detoxication of carcinogenic polycyclic aromatic hydrocarbons such as benzo(a)pyrene.

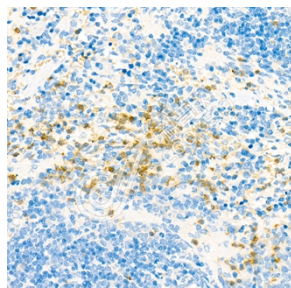
## 储存条件

**储存条件:** 自收到之日起 -20°C下储存一年, 避免反复冻融。  
**储存缓冲液:** 含 0.15% ProClin300 防腐剂, 100 μg/mL 牛血清白蛋白和 50%甘油的磷酸盐缓冲液。

## 图像



IHC 检测 TLR2 蛋白(货号 K134662).  
 样品: 小鼠 LPS 诱导的脓毒症模型脾脏, 4%多聚甲醛 (货号 KSG1101) 固定 12-24 小时.  
 抗原修复: 柠檬酸抗原修复液(干粉, pH 6.0) (KSG1201), 98°C, 20 分钟.  
 一抗: 1: 1800 稀释, 4°C 孵育过夜.  
 二抗: S-vision 免疫组化多聚二抗(山羊抗兔),即用型 (货号 KB3906), 室温孵育 20 分钟.



IHC 检测 TLR2 蛋白(货号 K134662).  
 样品: 大鼠脾脏炎症, 4%多聚甲醛 (货号 KSG1101) 固定 12-24 小时.  
 抗原修复: 柠檬酸抗原修复液(干粉, pH 6.0) (KSG1201), 98°C, 20 分钟.  
 一抗: 1: 1800 稀释, 4°C 孵育过夜.  
 二抗: S-vision 免疫组化多聚二抗(山羊抗兔),即用型 (货号 KB3906), 室温孵育 20 分钟.

For Research Use Only!

Ver. No.: V1-202603