

Anti-SHC 兔多克隆抗体

K134698 -20°C



产品信息

蛋白质全称	SHC 转化蛋白 1
别名	SHC1, SHC, SHCA, SHC adaptor protein 1, p46, p52, p52 SHC, p52SHC, p66, p66 SHC
免疫原	小鼠 SHC 重组蛋白
Uniprot ID	P98083
抗体亚型	IgG
纯化方式	亲和纯化
预测分子量 / 观测分子量	63 kDa / 63 kDa

应用

WB 免疫印迹

物种: 人, 小鼠, 大鼠

稀释比: 1: 500-1: 1000

阳性样品: 心, 脑

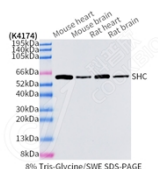
背景

SHC-transforming protein 1 is a protein that in humans is encoded by the SHC1 gene. SHC has been found to be important in the regulation of apoptosis and drug resistance in mammalian cells. The gene SHC1 is located on chromosome 1 and encodes 3 main protein isoforms: p66SHC, p52SHC and p46SHC. Isoform p46Shc and isoform p52Shc, once phosphorylated, couple activated receptor tyrosine kinases to Ras via the recruitment of the GRB2/SOS complex and are implicated in the cytoplasmic propagation of mitogenic signals.

储存条件

储存条件: 自收到之日起 -20°C下储存一年, 避免反复冻融。
储存缓冲液: 含 0.15% ProClin300 防腐剂, 100 µg/mL 牛血清白蛋白和 50%甘油的磷酸盐缓冲液。

图像



WB 检测 SHC 蛋白(货号 K134698).
 样品: 经 RIPA 裂解液(货号 KSG2002)处理的蛋白质.
 封闭: 3%脱脂牛奶(货号 KSGC310001)溶于 TBST 溶液,
 室温孵育 1 小时.
 一抗: 1: 500 稀释, 4°C 孵育过夜.
 二抗: HRP 标记山羊抗兔 IgG (H+L) (货号 KB69909), 1:
 5000 稀释, 室温孵育 1 小时.

For Research Use Only!

Ver. No.: V1-202603