

# Anti-SDF1 兔多克隆抗体

K134872 -20°C



## 产品信息

蛋白质全称	基质细胞衍生因子 1
别名	CXCL12, IRH, PBSF, SCYB12, SDF1, TLSF, TPAR1, C-X-C motif chemokine ligand 12
免疫原	KLH 偶联的小鼠 SDF1 合成肽
Uniprot ID	P40224
抗体亚型	IgG
纯化方式	亲和纯化
亚细胞定位	分泌型

## 应用

### IHC/IF 免疫组织化学/免疫荧光

物种: 小鼠

稀释比: 1: 500-1: 2000

阳性样品: 肝, 肺

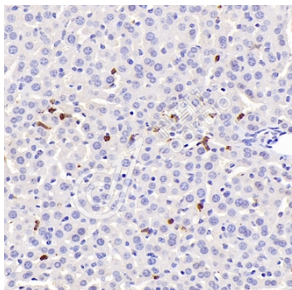
## 背景

The stromal cell-derived factor 1 (SDF1), also known as C-X-C motif chemokine 12 (CXCL12), is a chemokine protein which is encoded by the CXCL12 gene on chromosome 10 in humans. CXCL12 is strongly chemotactic for lymphocytes. During embryogenesis, it directs the migration of hematopoietic cells from fetal liver to bone marrow and the formation of large blood vessels. It has also been shown that CXCL12 signalling regulates the expression of CD20 on B cells. CXCL12 is also chemotactic for mesenchymal stem cells and is expressed in the area of inflammatory bone destruction, where it mediates their suppressive effect on osteoclastogenesis.

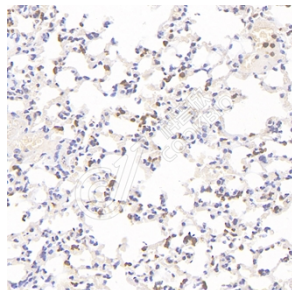
## 储存条件

**储存条件:** 自收到之日起 -20°C下储存一年, 避免反复冻融。  
**储存缓冲液:** 含 0.15% ProClin300 防腐剂, 100 µg/mL 牛血清白蛋白和 50%甘油的磷酸盐缓冲液。

## 图像



IHC 检测 SDF1 蛋白(货号 K134872).  
 样品: 小鼠肝, 4%多聚甲醛 (货号 KSG1101) 固定 12-24 小时.  
 抗原修复: 柠檬酸抗原修复液(干粉, pH 6.0) (KSG1201), 98°C, 20 分钟.  
 一抗: 1: 1300 稀释, 4°C 孵育过夜.  
 二抗: S-vision 免疫组化多聚二抗(山羊抗兔),即用型 (货号 KB3906), 室温孵育 20 分钟.



IHC 检测 SDF1 蛋白(货号 K134872).  
 样品: 小鼠肺, 4%多聚甲醛 (货号 KSG1101) 固定 12-24 小时.  
 抗原修复: 柠檬酸抗原修复液(干粉, pH 6.0) (KSG1201), 98°C, 20 分钟.  
 一抗: 1: 1300 稀释, 4°C 孵育过夜.  
 二抗: S-vision 免疫组化多聚二抗(山羊抗兔),即用型 (货号 KB3906), 室温孵育 20 分钟.

For Research Use Only!

Ver. No.: V1-202603