

Anti-Catalase 兔多克隆抗体

K135043 -20°C


产品信息

蛋白质全称	过氧化氢酶
别名	Cat, CAT, catalase, Catalase
免疫原	KLH 偶联的小鼠 Catalase 合成肽
Uniprot ID	P24270
抗体亚型	IgG
纯化方式	亲和纯化
预测分子量 / 观测分子量	60 kDa / 60 kDa

应用

WB 免疫印迹

物种：人，小鼠，大鼠

稀释比：1: 1000-1: 2000

阳性样品：肝

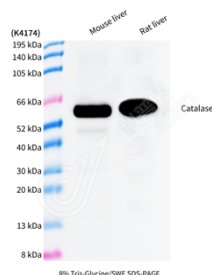
背景

Catalase is the classical marker for peroxisomes and is the most abundant protein within peroxisomes. It is found in almost all aerobically respiring organisms and serves to protect cells from the toxic effects of hydrogen peroxide. Likewise, catalase has one of the highest turnover numbers of all enzymes; one catalase molecule can convert millions of hydrogen peroxide molecules to water and oxygen each second. Human catalase forms a tetramer composed of four subunits, each of which can be conceptually divided into four domains and each over 500 amino acids long.

储存条件

储存条件：自收到之日起 -20°C下储存一年，避免反复冻融。
储存缓冲液：含 0.15% ProClin300 防腐剂, 100 μg/mL 牛血清白蛋白和 50%甘油的磷酸盐缓冲液。

图像



WB 检测 Catalase 蛋白(货号 K135043).
 样品: 经 RIPA 裂解液(货号 KSG2002)处理的蛋白质.
 封闭: 3%脱脂牛奶(货号 KSGC310001)溶于 TBST 溶液,
 室温孵育 1 小时.
 一抗: 1: 1000 稀释, 4°C 孵育过夜.
 二抗: HRP 标记山羊抗兔 IgG (H+L) (货号 KB69909), 1:
 5000 稀释, 室温孵育 1 小时.

For Research Use Only!
Ver. No.: V1-202603