

# Anti-MEKK2 兔多克隆抗体

**K135256** -20°C


## 产品信息

蛋白质全称	丝裂原活化蛋白激酶激酶激酶 2
别名	Map3k2, MAP3K2, MEKK2, MEKK2B, Mitogen-activated protein kinase kinase kinase 2
免疫原	小鼠 MEKK2 重组蛋白
Uniprot ID	Q61083
抗体亚型	IgG
纯化方式	亲和纯化
预测分子量 / 观测分子量	70 kDa / 70 kDa

## 应用

### WB 免疫印迹

物种: 人, 小鼠, 大鼠

稀释比: 1: 500-1: 1000

阳性样品: 胸腺

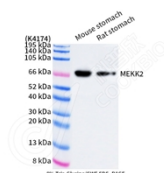
## 背景

Mitogen-activated protein kinase kinase kinase 2 is an enzyme encoded by the MAP3K2 gene. The protein is a member of serine/threonine protein kinase family. This kinase preferentially activates other kinases involved in the MAP kinase signaling pathway. This kinase has been shown to directly phosphorylate and activate IκB kinases, and thus plays a role in NF-κB signaling pathway. This kinase has also been found to bind and activate protein kinase C-related kinase 2, which suggests its involvement in a regulated signaling process.

## 储存条件

**储存条件:** 自收到之日起 -20°C下储存一年, 避免反复冻融。  
**储存缓冲液:** 含 0.15% ProClin300 防腐剂, 100 μg/mL 牛血清白蛋白和 50%甘油的磷酸盐缓冲液。

## 图像



WB 检测 MEKK2 蛋白(货号 K135256).  
 样品: 经 RIPA 裂解液(货号 KSG2002)处理的蛋白质.  
 封闭: 3%脱脂牛奶(货号 KSGC310001)溶于 TBST 溶液,  
 室温孵育 1 小时.  
 一抗: 1: 500 稀释, 4°C 孵育过夜.  
 二抗: HRP 标记山羊抗兔 IgG (H+L) (货号 KB69909), 1:  
 5000 稀释, 室温孵育 1 小时.

**For Research Use Only!**
**Ver. No.: V1-202603**