

# Anti-MAPK11 兔多克隆抗体

**K135433** -20°C



## 产品信息

蛋白质全称	丝裂原活化蛋白激酶 11
别名	Mapk11, MAPK11, P38B, P38BETA2, PRKM11, SAPK2, SAPK2B, p38-2, p38Beta, mitogen-activated protein kinase 11
免疫原	小鼠 MAPK11 重组蛋白
Uniprot ID	Q9WU11
抗体亚型	IgG
纯化方式	亲和纯化
预测分子量 / 观测分子量	42 kDa / 42 kDa

## 应用

### WB 免疫印迹

物种: 小鼠, 大鼠

稀释比: 1: 500-1: 1500

阳性样品: 心, 脑

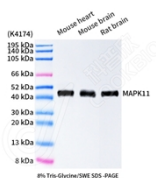
## 背景

Mitogen-activated protein kinase 11 is an enzyme encoded by the MAPK11 gene. The protein is a member of the MAP kinase family. MAP kinases act as an integration point for multiple biochemical signals, and are involved in a wide variety of cellular processes such as proliferation, differentiation, transcription regulation, and development. This kinase is most closely related to p38 MAP kinase, both of which can be activated by proinflammatory cytokines and environmental stress.

## 储存条件

**储存条件:** 自收到之日起 -20°C下储存一年, 避免反复冻融。  
**储存缓冲液:** 含 0.15% ProClin300 防腐剂, 100 µg/mL 牛血清白蛋白和 50%甘油的磷酸盐缓冲液。

## 图像



WB 检测 MAPK11 蛋白(货号 K135433).  
 样品: 经 RIPA 裂解液(货号 KSG2002)处理的蛋白质.  
 封闭: 3%脱脂牛奶(货号 KSGC310001)溶于 TBST 溶液,  
 室温孵育 1 小时.  
 一抗: 1: 500 稀释, 4°C 孵育过夜.  
 二抗: HRP 标记山羊抗兔 IgG (H+L) (货号 KB69909), 1:  
 5000 稀释, 室温孵育 1 小时.

**For Research Use Only!**

**Ver. No.: V1-202603**