

Anti-PKC beta 2 兔多克隆抗体

K135499 -20°C



产品信息

蛋白质全称	蛋白激酶 C β 型
别名	Prkcb, rotein Kinase C, KPCB, PKC Beta, PKC-B, PRKCB II, PRKCB2, Protein kinase C beta, Protein kinase C beta type, PKC- β 2
免疫原	小鼠 PKC- β 2 重组蛋白
Uniprot ID	P68404
抗体亚型	IgG
纯化方式	亲和纯化
亚细胞定位	细胞核

应用

IHC/IF 免疫组织化学/免疫荧光

物种: 小鼠, 大鼠

稀释比: 1: 750-1: 3000

阳性样品: 脑, 小脑

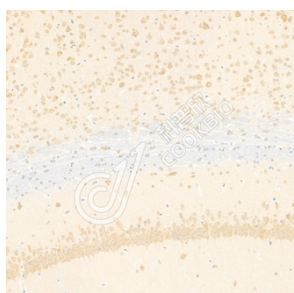
背景

Protein kinase C (PKC) is a family of serine and threonine-specific protein kinases that can be activated by calcium and second messenger diacylglycerol. PKC family members phosphorylate a wide variety of protein targets and are known to be involved in diverse cellular signaling pathways. PKC family members also serve as major receptors for phorbol esters, a class of tumor promoters. Each member of the PKC family has a specific expression profile and is believed to play a distinct role in cells.

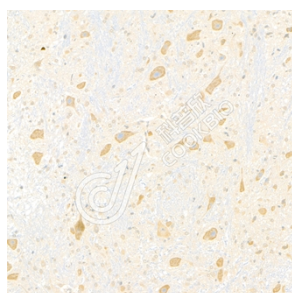
储存条件

储存条件: 自收到之日起 -20°C下储存一年, 避免反复冻融。
储存缓冲液: 含 0.15% ProClin300 防腐剂, 100 μ g/mL 牛血清白蛋白和 50%甘油的磷酸盐缓冲液。

图像



IHC 检测 PKC beta 2 蛋白(货号 K135499).
 样品: 小鼠脑, 4%多聚甲醛 (货号 KSG1101) 固定 12-24 小时.
 抗原修复: 柠檬酸抗原修复液(干粉, pH 6.0) (KSG1201), 98°C, 20 分钟.
 一抗: 1: 1900 稀释, 4°C 孵育过夜.
 二抗: S-vision 免疫组化多聚二抗(山羊抗兔), 即用型 (货号 KB3906), 室温孵育 20 分钟.



IHC 检测 PKC beta 2 蛋白(货号 K135499).
 样品: 大鼠小脑, 4%多聚甲醛 (货号 KSG1101) 固定 12-24 小时.
 抗原修复: 柠檬酸抗原修复液(干粉, pH 6.0) (KSG1201), 98°C, 20 分钟.
 一抗: 1: 1900 稀释, 4°C 孵育过夜.
 二抗: S-vision 免疫组化多聚二抗(山羊抗兔), 即用型 (货号 KB3906), 室温孵育 20 分钟.

For Research Use Only!

Ver. No.: V1-202603