

# Anti-JNK3 兔多克隆抗体

**K135538** -20°C


## 产品信息

蛋白质全称	丝裂原活化蛋白激酶 10
别名	JNK1 + JNK2 + JNK3, JNK1/2/3, JNK1+2+3, MAPK8, MAPK9, MAPK10, c Jun N terminal kinase 1, c Jun N terminal kinase 2, c Jun N terminal kinase 3, JNK3, JNK3A, PRKM10, SAPK1b, Mitogen-activated protein kinase 10
免疫原	KLH 偶联的小鼠 JNK3 合成肽
Uniprot ID	Q61831
抗体亚型	IgG
纯化方式	亲和纯化
预测分子量 / 观测分子量	53 kDa / 53 kDa

## 应用

### WB 免疫印迹

物种: 人, 小鼠, 大鼠

稀释比: 1: 500-1: 1000

阳性样品: 脑

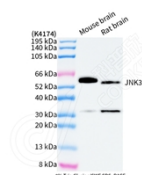
## 背景

MAPK10 (JNK3) is a member of the MAP kinase family. MAP kinases act as an integration point for multiple biochemical signals, and are involved in a wide variety of cellular processes such as proliferation, differentiation, transcription regulation and development. This protein is a neuron-specific form of c-Jun N-terminal kinases (JNKs). Through its phosphorylation and nuclear localization, this kinase plays regulatory roles in the signaling pathways of neuronal apoptosis.

## 储存条件

**储存条件:** 自收到之日起 -20°C下储存一年, 避免反复冻融。  
**储存缓冲液:** 含 0.15% ProClin300 防腐剂, 100 µg/mL 牛血清白蛋白和 50%甘油的磷酸盐缓冲液。

## 图像



WB 检测 JNK3 蛋白(货号 K135538).  
 样品: 经 RIPA 裂解液(货号 KSG2002)处理的蛋白质.  
 封闭: 3%脱脂牛奶(货号 KSGC310001)溶于 TBST 溶液, 室温孵育 1 小时.  
 一抗: 1: 1000 稀释, 4°C 孵育过夜.  
 二抗: HRP 标记山羊抗兔 IgG (H+L) (货号 KB69909), 1: 5000 稀释, 室温孵育 1 小时.

**For Research Use Only!**
**Ver. No.: V1-202603**