

Anti-E-cadherin 兔多克隆抗体

K135604 -20°C


产品信息

蛋白质全称	钙黏蛋白 1
别名	CDH1, Arc-1, CD324, CDHE, ECAD, LCAM, UVO, cadherin 1, BCDS1, E-Cadherin, CAM 120/80, Epithelial cadherin
免疫原	KLH 偶联的小鼠 E-cadherin 合成肽
Uniprot ID	P09803
抗体亚型	IgG
纯化方式	亲和纯化
预测分子量 / 观测分子量	98 kDa / 120-140 kDa

应用

WB 免疫印迹

物种: 人, 小鼠, 大鼠

稀释比: 1: 500-1: 1000

阳性样品: A-431 细胞

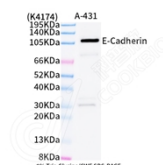
背景

Cadherins are calcium-dependent cell adhesion proteins. They preferentially interact with themselves in a homophilic manner in connecting cells; cadherins may thus contribute to the sorting of heterogeneous cell types. CDH1 is involved in mechanisms regulating cell-cell adhesions, mobility and proliferation of epithelial cells. Has a potent invasive suppressor role. It is a ligand for integrin alpha-E/beta-7. E-Cad/CTF2 promotes non-amyloidogenic degradation of Abeta precursors. Has a strong inhibitory effect on APP C99 and C83 production.

储存条件

储存条件: 自收到之日起 -20°C下储存一年, 避免反复冻融。
储存缓冲液: 含 0.15% ProClin300 防腐剂, 100 µg/mL 牛血清白蛋白和 50%甘油的磷酸盐缓冲液。

图像



WB 检测 E-cadherin 蛋白(货号 K135604).
 样品: 经 RIPA 裂解液(货号 KSG2002)处理的蛋白质.
 封闭: 3%脱脂牛奶(货号 KSGC310001)溶于 TBST 溶液,
 室温孵育 1 小时.
 一抗: 1: 1000 稀释, 4°C 孵育过夜.
 二抗: HRP 标记山羊抗兔 IgG (H+L) (货号 KB69909), 1:
 5000 稀释, 室温孵育 1 小时.

For Research Use Only!
Ver. No.: V1-202603