

Anti-CSHL1/CSL 兔多克隆抗体

K135883 -20°C



产品信息

蛋白质全称	小鼠蛋白
别名	Stretch-responsive skeletal muscle protein, Chisel protein, Lactogen like, Smpx, CSHL1, Chorionic somatomammotropin CS5, CSHP1, Chorionic somatomammotropin hormone like 1, Chorionic somatomammotropin like, Growth hormone cluster, Csl, hCSL
免疫原	小鼠 CSL 重组蛋白
Uniprot ID	Q9DC77
抗体亚型	IgG
纯化方式	亲和纯化
亚细胞定位	细胞核

应用

IHC/IF 免疫组织化学/免疫荧光

物种: 小鼠, 大鼠

稀释比: 1: 250-1: 500

阳性样品: 心, 骨骼肌

背景

CSHL1 is a member of the somatotropin/prolactin family of hormones which play an important role in growth control. The protein encoded by this gene is a member of the somatotropin/prolactin family of hormones which play an important role in growth control. The gene, along with four other related genes, is located at the growth hormone locus on chromosome 17 where they are interspersed in the same transcriptional orientation; an arrangement which is thought to have evolved by a series of gene duplications.

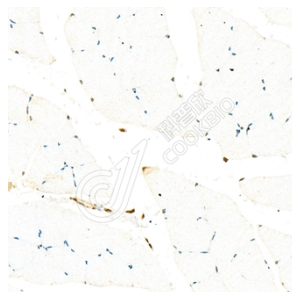
储存条件

储存条件: 自收到之日起 -20°C下储存一年, 避免反复冻融。
储存缓冲液: 含 0.15% ProClin300 防腐剂, 100 µg/mL 牛血清白蛋白和 50%甘油的磷酸盐缓冲液。

图像



IHC 检测 CSHL1/CSL 蛋白(货号 K135883).
 样品: 小鼠心, 4%多聚甲醛 (货号 KSG1101) 固定 12-24 小时.
 抗原修复: 柠檬酸抗原修复液(干粉, pH 6.0) (KSG1201), 98°C, 20 分钟.
 一抗: 1: 400 稀释, 4°C 孵育过夜.
 二抗: S-vision 免疫组化多聚二抗(山羊抗兔),即用型 (货号 KB3906), 室温孵育 20 分钟.



IHC 检测 CSHL1/CSL 蛋白(货号 K135883).
 样品: 大鼠骨骼肌, 4%多聚甲醛 (货号 KSG1101) 固定 12-24 小时.
 抗原修复: 柠檬酸抗原修复液(干粉, pH 6.0) (KSG1201), 98°C, 20 分钟.
 一抗: 1: 400 稀释, 4°C 孵育过夜.
 二抗: S-vision 免疫组化多聚二抗(山羊抗兔),即用型 (货号 KB3906), 室温孵育 20 分钟.

For Research Use Only!

Ver. No.: V1-202603