

Anti-PCK1/PEPC 兔多克隆抗体

K135898 -20°C


产品信息

蛋白质全称	胞质 GTP 依赖磷酸烯醇丙酮酸羧激酶
别名	PEPCK-C, Pck1, PEPC, Phosphoenolpyruvate carboxylase, PEP carboxykinase, MGC22652, Phosphoenolpyruvate carboxykinase 1, Pepck1
免疫原	小鼠 PCK1 重组蛋白
Uniprot ID	Q9Z2V4
抗体亚型	IgG
纯化方式	亲和纯化
预测分子量 / 观测分子量	69 kDa / 69 kDa

应用

WB 免疫印迹

物种: 小鼠, 大鼠

稀释比: 1: 500-1: 1000

阳性样品: 肝

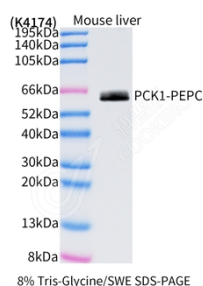
背景

The PCK1 is a main control point for the regulation of gluconeogenesis. The cytosolic enzyme encoded by this gene, along with GTP, catalyzes the formation of phosphoenolpyruvate from oxaloacetate, with the release of carbon dioxide and GDP. The expression of this gene can be regulated by insulin, glucocorticoids, glucagon, cAMP, and diet. Defects in this gene are a cause of cytosolic phosphoenolpyruvate carboxykinase deficiency. A mitochondrial isozyme of the encoded protein also has been characterized.

储存条件

储存条件: 自收到之日起 -20°C下储存一年, 避免反复冻融。
储存缓冲液: 含 0.15% ProClin300 防腐剂, 100 μg/mL 牛血清白蛋白和 50%甘油的磷酸盐缓冲液。

图像



WB 检测 PCK1/PEPC 蛋白(货号 K135898).
 样品: 经 RIPA 裂解液(货号 KSG2002)处理的蛋白质.
 封闭: 3%脱脂牛奶(货号 KSGC310001)溶于 TBST 溶液,
 室温孵育 1 小时.
 一抗: 1: 1000 稀释, 4°C 孵育过夜.
 二抗: HRP 标记山羊抗兔 IgG (H+L) (货号 KB69909), 1:
 5000 稀释, 室温孵育 1 小时.

For Research Use Only!
Ver. No.: V1-202603