

Anti-GIT1 兔多克隆抗体

K1333066 -20°C



产品信息

蛋白质全称	ARF GTP 酶激活蛋白 GIT1
别名	ARF GAP GIT1, G protein-coupled receptor kinase-interactor 1, GRK-interacting protein 1, Git1, Cat1
免疫原	小鼠 GIT1 重组蛋白
Uniprot ID	Q68FF6
抗体亚型	IgG
纯化方式	亲和纯化
预测分子量 / 观测分子量	85 kDa / 95 kDa

应用

WB 免疫印迹

物种: 小鼠, 大鼠

稀释比: 1: 500-1: 1000

阳性样品: 脑

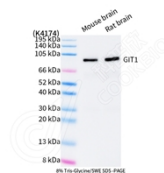
背景

GTPase-activating protein for the ADP ribosylation factor family. May serve as a scaffold to bring together molecules to form signaling modules controlling vesicle trafficking, adhesion and cytoskeletal organization. Increases the speed of cell migration, as well as the size and rate of formation of protrusions, possibly by targeting PAK1 to adhesions and the leading edge of lamellipodia. Sequesters inactive non-tyrosine- phosphorylated paxillin in cytoplasmic complexes (By similarity).

储存条件

储存条件: 自收到之日起 -20°C下储存一年, 避免反复冻融。
储存缓冲液: 含 0.15% ProClin300 防腐剂, 100 μg/mL 牛血清白蛋白和 50%甘油的磷酸盐缓冲液。

图像



WB 检测 GIT1 蛋白(货号 K1333066).
 样品: 经 RIPA 裂解液(货号 KSG2002)处理的蛋白质.
 封闭: 3%脱脂牛奶(货号 KSGC310001)溶于 TBST 溶液,
 室温孵育 1 小时.
 一抗: 1: 1000 稀释, 4°C 孵育过夜.
 二抗: HRP 标记山羊抗兔 IgG (H+L) (货号 KB69909), 1:
 5000 稀释, 室温孵育 1 小时.

For Research Use Only!

Ver. No.: V1-202603