

Anti-CARM1 兔多克隆抗体

K1333108 -20°C



产品信息

| | |
|------------|---|
| 蛋白质全称 | 组蛋白精氨酸甲基转移酶 CARM1 |
| 别名 | Prmt4, Protein arginine N-methyltransferase 4, PRMT 4, Coactivator-associated arginine methyltransferase 1, Carm1 |
| 免疫原 | 小鼠 CARM1 重组蛋白 |
| Uniprot ID | Q9WVG6 |
| 抗体亚型 | IgG |
| 纯化方式 | 亲和纯化 |
| 亚细胞定位 | 细胞质, 细胞核 |

应用

IHC/IF 免疫组织化学/免疫荧光

物种: 小鼠, 大鼠

稀释比: 1: 400-1: 2000

阳性样品: 脑, 睾丸

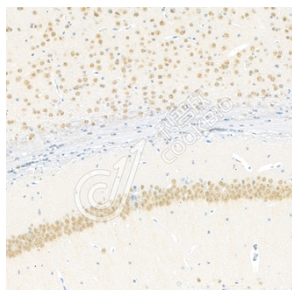
背景

CARM1, also named as PRMT4, belongs to the protein arginine N-methyltransferase family. It is a dual functional coregulator that facilitates transcription initiation by methylation of Arg17 and Arg26 of histone H3 and also dictates the subsequent coactivator complex disassembly by methylation of the steroid receptor coactivator family coactivators and p300/cAMP-response element-binding protein. CARM1 functions as a coactivator for many nuclear receptors, such as oestrogen receptor, androgen receptor, thyroid receptor and farnesoid X-receptor. It also coactivates other transcription factors such as myocyte enhancer factor 2C (MEF2C), β -catenin, p53, nuclear factor (NF)- κ B and the cAMP-responsive element-binding factor.

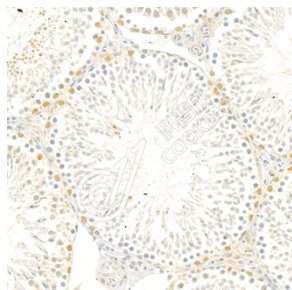
储存条件

储存条件: 自收到之日起 -20°C下储存一年, 避免反复冻融。
储存缓冲液: 含 0.15% ProClin300 防腐剂, 100 μ g/mL 牛血清白蛋白和 50%甘油的磷酸盐缓冲液。

图像



IHC 检测 CARM1 蛋白(货号 K1333108).
 样品: 小鼠脑, 4%多聚甲醛(货号 KSG1101) 固定 12-24 小时.
 抗原修复: 柠檬酸抗原修复液(干粉, pH 6.0) (KSG1201), 98°C, 20 分钟.
 一抗: 1: 1200 稀释, 4°C 孵育过夜.
 二抗: S-vision 免疫组化多聚二抗(山羊抗兔), 即用型(货号 KB3906), 室温孵育 20 分钟.



IHC 检测 CARM1 蛋白(货号 K1333108).
 样品: 大鼠睾丸, 4%多聚甲醛(货号 KSG1101) 固定 12-24 小时.
 抗原修复: 柠檬酸抗原修复液(干粉, pH 6.0) (KSG1201), 98°C, 20 分钟.
 一抗: 1: 1200 稀释, 4°C 孵育过夜.
 二抗: S-vision 免疫组化多聚二抗(山羊抗兔), 即用型(货号 KB3906), 室温孵育 20 分钟.

For Research Use Only!

Ver. No.: V1-202603