

Anti-UBE2D3 兔多克隆抗体

K1333309 -20°C



产品信息

蛋白质全称	泛素结合酶 E2D3
别名	(E3-independent) E2 ubiquitin-conjugating enzyme D3, E2 ubiquitin-conjugating enzyme D3, Ubiquitin carrier protein D3, Ubiquitin-conjugating enzyme E2(17)KB 3, Ubiquitin-protein ligase D3, Ube2d3
免疫原	小鼠 UBE2D3 重组蛋白
Uniprot ID	P61079
抗体亚型	IgG
纯化方式	亲和纯化
预测分子量 / 观测分子量	17 kDa / 17 kDa

应用

WB 免疫印迹

物种: 人, 小鼠, 大鼠

稀释比: 1: 500-1: 1000

阳性样品: 胸腺

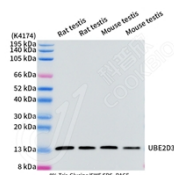
背景

The modification of proteins with ubiquitin is an important cellular mechanism for targeting abnormal or short-lived proteins for degradation. UBE2D3 is a member of the E2 ubiquitin-conjugating enzyme family. This enzyme functions in the ubiquitination of the tumor-suppressor protein p53, which is induced by an E3 ubiquitin-protein ligase. The modification of proteins with ubiquitin is an important cellular mechanism for targeting abnormal or short-lived proteins for degradation.

储存条件

储存条件: 自收到之日起 -20°C下储存一年, 避免反复冻融。
储存缓冲液: 含 0.15% ProClin300 防腐剂, 100 µg/mL 牛血清白蛋白和 50%甘油的磷酸盐缓冲液。

图像



WB 检测 UBE2D3 蛋白(货号 K1333309).
 样品: 经 RIPA 裂解液(货号 KSG2002)处理的蛋白质.
 封闭: 3%脱脂牛奶(货号 KSGC310001)溶于 TBST 溶液, 室温孵育 1 小时.
 一抗: 1: 1000 稀释, 4°C 孵育过夜.
 二抗: HRP 标记山羊抗兔 IgG (H+L) (货号 KB69909), 1: 5000 稀释, 室温孵育 1 小时.

For Research Use Only!

Ver. No.: V1-202603