

Anti-Fascin 兔多克隆抗体

K1333450 -20°C



产品信息

蛋白质全称	肌成束蛋白
别名	Singed-like protein, Fscn1, Fan1, Snl, HSN, p55, SNL
免疫原	KLH 偶联的小鼠 Fascin 合成肽
Uniprot ID	Q61553
抗体亚型	IgG
纯化方式	亲和纯化
预测分子量 / 观测分子量	55 kDa / 55 kDa

应用

WB 免疫印迹

物种：小鼠，大鼠

稀释比：1: 500-1: 1000

阳性样品：海马区

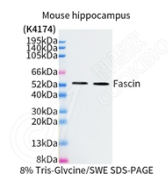
背景

Fascin is a highly conserved and ubiquitous actin cross-linking protein that has a major function in cell motility and adhesion. Fascin localizes to a number of highly dynamic cellular structures that require strong mechanical support which include stress fibers and cellular protrusions such as microvilli, microspikes and lamellipodia. Fascin is up-regulated in many human carcinomas. It's a marker for Reed-Sternberg cells in Hodgkin's disease; it is also a highly selective marker for dendritic cells of lymphoid tissues.

储存条件

储存条件：自收到之日起 -20°C下储存一年，避免反复冻融。
储存缓冲液：含 0.15% ProClin300 防腐剂, 100 µg/mL 牛血清白蛋白和 50%甘油的磷酸盐缓冲液。

图像



WB 检测 Fascin 蛋白(货号 K1333450).
 样品: 经 RIPA 裂解液(货号 KSG2002)处理的蛋白质.
 封闭: 3%脱脂牛奶(货号 KSGC310001)溶于 TBST 溶液,
 室温孵育 1 小时.
 一抗: 1: 1000 稀释, 4°C 孵育过夜.
 二抗: HRP 标记山羊抗兔 IgG (H+L) (货号 KB69909), 1:
 5000 稀释, 室温孵育 1 小时.

For Research Use Only!

Ver. No.: V1-202603